

Product datasheet for **TA315671**

TAOK1 Rabbit Polyclonal Antibody

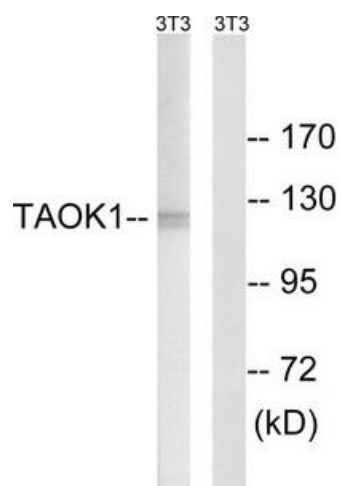
Product data:

Product Type:	Primary Antibodies
Applications:	IHC, WB
Recommended Dilution:	WB: 1:500~1:3000, IHC: 1:50~1:100, ELISA: 1:5000
Reactivity:	Human, Mouse, Rat
Host:	Rabbit
Isotype:	IgG
Clonality:	Polyclonal
Immunogen:	The antiserum was produced against synthesized peptide derived from internal of human TAOK1.
Formulation:	Phosphate buffered saline (without Mg ²⁺ and Ca ²⁺), pH 7.4, 150mM NaCl, 0.02% sodium azide and 50% glycerol.
Concentration:	lot specific
Purification:	The antibody was affinity-purified from rabbit antiserum by affinity-chromatography using epitope-specific immunogen.
Conjugation:	Unconjugated
Storage:	Store at -20°C as received.
Stability:	Stable for 12 months from date of receipt.
Gene Name:	TAO kinase 1
Database Link:	NP_065842 Entrez Gene 216965 MouseEntrez Gene 286993 RatEntrez Gene 57551 Human Q7L7X3
Synonyms:	hKFC-B; hTAOK1; KFC-B; MAP3K16; MARKK; PSK-2; PSK2; TAO1
Note:	TAOK1 antibody detects endogenous levels of total TAOK1 protein.
Protein Families:	Druggable Genome, Protein Kinase
Protein Pathways:	MAPK signaling pathway

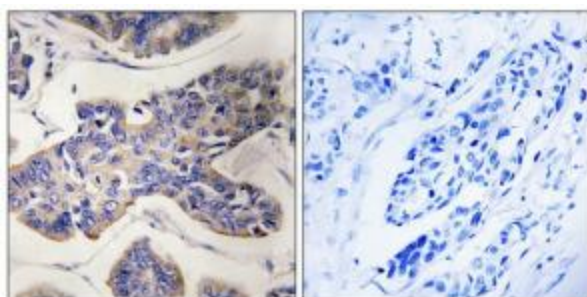


[View online »](#)

Product images:



Western blot analysis of extracts from NIH/3T3 cells, using TAOK1 antibody. The lane on the right is treated with the synthesized peptide.



Immunohistochemistry analysis of paraffin-embedded human breast carcinoma tissue, using TAOK1 antibody. The picture on the right is treated with the synthesized peptide.