

Product datasheet for **TA315668**

SERINC1 Rabbit Polyclonal Antibody

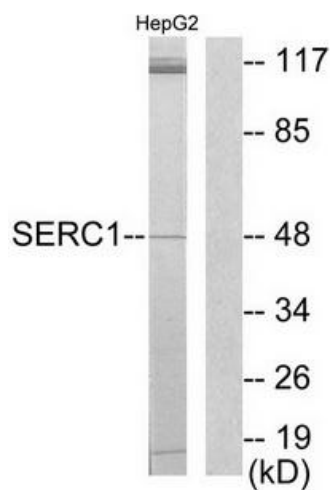
Product data:

Product Type:	Primary Antibodies
Applications:	WB
Recommended Dilution:	WB: 1:500~1:3000, ELISA: 1:20000
Reactivity:	Human, Mouse, Rat
Host:	Rabbit
Isotype:	IgG
Clonality:	Polyclonal
Immunogen:	The antiserum was produced against synthesized peptide derived from internal of human SERC1.
Formulation:	Phosphate buffered saline (without Mg ²⁺ and Ca ²⁺), pH 7.4, 150mM NaCl, 0.02% sodium azide and 50% glycerol.
Concentration:	lot specific
Purification:	The antibody was affinity-purified from rabbit antiserum by affinity-chromatography using epitope-specific immunogen.
Conjugation:	Unconjugated
Storage:	Store at -20°C as received.
Stability:	Stable for 12 months from date of receipt.
Gene Name:	serine incorporator 1
Database Link:	NP_065806 Entrez Gene 56442 MouseEntrez Gene 294421 RatEntrez Gene 57515 Human Q9NRX5
Synonyms:	TDE1L; TDE2; TMS-2; TMS2
Note:	SERC1 antibody detects endogenous levels of total SERC1 protein.
Protein Families:	Transmembrane



[View online »](#)

Product images:



Western blot analysis of extracts from HepG2 cells, using SERINC1 antibody. The lane on the right is treated with the synthesized peptide.