

Product datasheet for **TA315667**

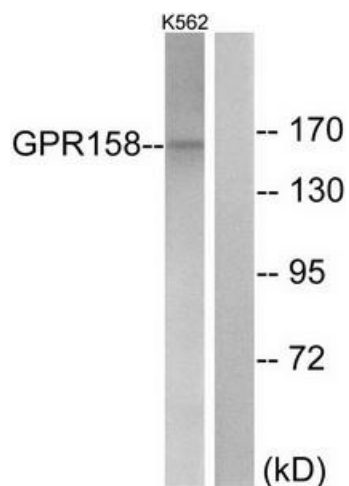
GPR158 Rabbit Polyclonal Antibody

Product data:

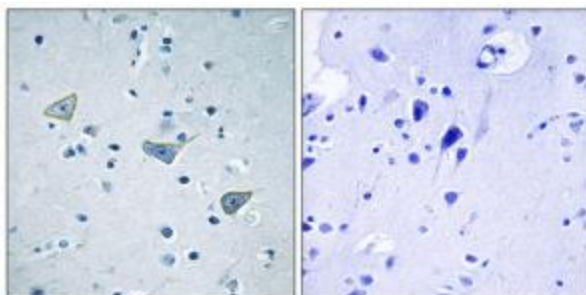
Product Type:	Primary Antibodies
Applications:	IF, IHC, WB
Recommended Dilution:	WB: 1:500~1:3000, IHC: 1:50~1:100, IF: 1:100~1:500, ELISA: 1:5000
Reactivity:	Human, Mouse
Host:	Rabbit
Isotype:	IgG
Clonality:	Polyclonal
Immunogen:	The antiserum was produced against synthesized peptide derived from internal of human GPR158.
Formulation:	Phosphate buffered saline (without Mg ²⁺ and Ca ²⁺), pH 7.4, 150mM NaCl, 0.02% sodium azide and 50% glycerol.
Concentration:	lot specific
Purification:	The antibody was affinity-purified from rabbit antiserum by affinity-chromatography using epitope-specific immunogen.
Conjugation:	Unconjugated
Storage:	Store at -20°C as received.
Stability:	Stable for 12 months from date of receipt.
Gene Name:	G protein-coupled receptor 158
Database Link:	NP_065803 Entrez Gene 241263 Mouse Entrez Gene 57512 Human Q5T848
Synonyms:	RP11-59G22.1
Note:	GPR158 antibody detects endogenous levels of total GPR158 protein.
Protein Families:	Druggable Genome, Transmembrane



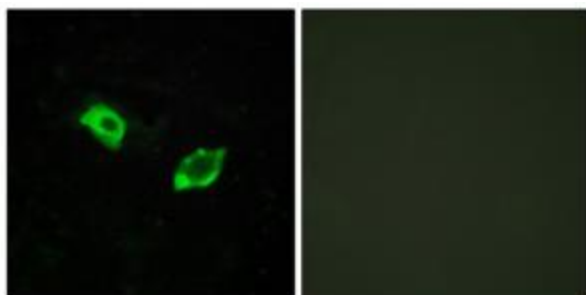
[View online »](#)

Product images:

Western blot analysis of extracts from K562 cells, using GPR158 antibody. The lane on the right is treated with the synthesized peptide.



Immunohistochemistry analysis of paraffin-embedded human brain tissue using GPR158 antibody. The picture on the right is treated with the synthesized peptide.



Immunofluorescence analysis of HUVEC cells, using GPR158 antibody. The picture on the right is treated with the synthesized peptide.