

Product datasheet for **TA315663**

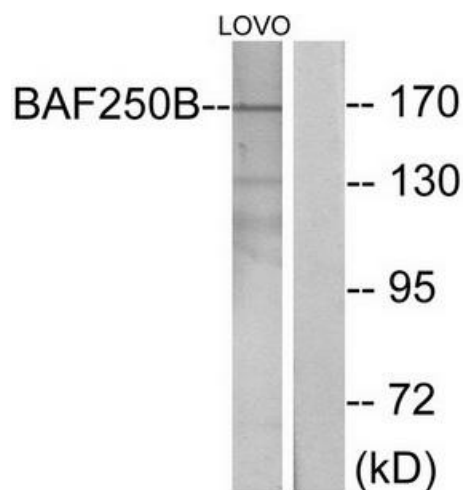
ARID1B Rabbit Polyclonal Antibody

Product data:

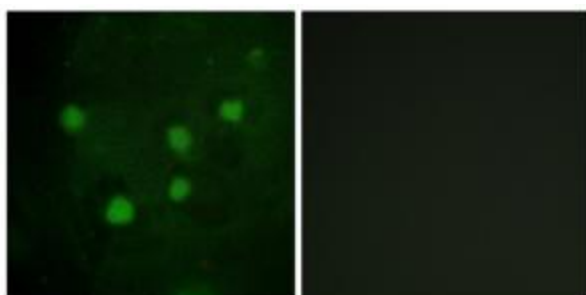
Product Type:	Primary Antibodies
Applications:	IF, WB
Recommended Dilution:	WB: 1:500~1:3000, IF: 1:00~1:500, ELISA: 1:10000
Reactivity:	Human, Rat
Host:	Rabbit
Isotype:	IgG
Clonality:	Polyclonal
Immunogen:	The antiserum was produced against synthesized peptide derived from interal of human BAF250B.
Formulation:	Phosphate buffered saline (without Mg ²⁺ and Ca ²⁺), pH 7.4, 150mM NaCl, 0.02% sodium azide and 50% glycerol.
Concentration:	lot specific
Purification:	The antibody was affinity-purified from rabbit antiserum by affinity-chromatography using epitope-specific immunogen.
Conjugation:	Unconjugated
Storage:	Store at -20°C as received.
Stability:	Stable for 12 months from date of receipt.
Gene Name:	AT-rich interaction domain 1B
Database Link:	NP_059989 Entrez Gene 282546 Rat Entrez Gene 57492 Human Q8NFD5
Synonyms:	6A3-5; BAF250B; BRIGHT; DAN15; ELD; MRD12; OSA1; OSA2; P250R
Note:	BAF250B antibody detects endogenous levels of total BAF250B protein.



[View online »](#)

Product images:

Western blot analysis of extracts from LOVO cells, using BAF250B antibody. The lane on the right is treated with the synthesized peptide.



Immunofluorescence analysis of HUVEC cells, using BAF250B antibody. The picture on the right is treated with the synthesized peptide.