

## Product datasheet for **TA315656**

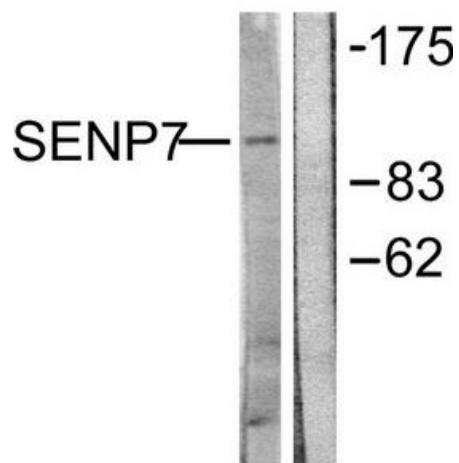
### SENP7 Rabbit Polyclonal Antibody

#### Product data:

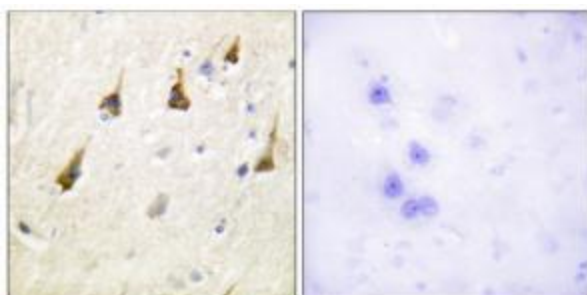
Product Type:	Primary Antibodies
Applications:	IHC, WB
Recommended Dilution:	WB: 1:500~1:3000, IHC: 1:50~1:100, ELISA: 1:40000
Reactivity:	Human, Mouse
Host:	Rabbit
Isotype:	IgG
Clonality:	Polyclonal
Immunogen:	The antiserum was produced against synthesized peptide derived from Internal of human SENP7.
Formulation:	Phosphate buffered saline (without Mg <sup>2+</sup> and Ca <sup>2+</sup> ), pH 7.4, 150mM NaCl, 0.02% sodium azide and 50% glycerol.
Concentration:	lot specific
Purification:	The antibody was affinity-purified from rabbit antiserum by affinity-chromatography using epitope-specific immunogen.
Conjugation:	Unconjugated
Storage:	Store at -20°C as received.
Stability:	Stable for 12 months from date of receipt.
Gene Name:	SUMO1/sentrin specific peptidase 7
Database Link:	<a href="#">NP_001070671</a> <a href="#">Entrez Gene 66315 Mouse</a> <a href="#">Entrez Gene 57337 Human</a> <a href="#">Q9BQF6</a>
Synonyms:	KIAA1707; MGC157730
Note:	SENP7 antibody detects endogenous levels of total SENP7 protein.
Protein Families:	Druggable Genome, Protease



[View online »](#)

**Product images:**

Western blot analysis of extracts from HuvEc cells, using SENP7 antibody. The lane on the right is treated with the synthesized peptide.



Immunohistochemistry analysis of paraffin-embedded human brain tissue using SENP7 antibody. The picture on the right is treated with the synthesized peptide.