

## Product datasheet for **TA315655**

### Zinc finger protein 287 (ZNF287) Rabbit Polyclonal Antibody

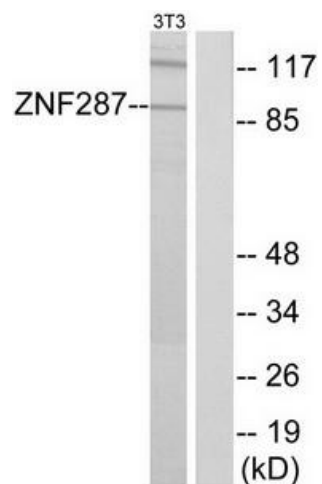
#### Product data:

Product Type:	Primary Antibodies
Applications:	IHC, WB
Recommended Dilution:	WB: 1:500~1:3000, IHC: 1:50~1:100, ELISA: 1:5000
Reactivity:	Human
Host:	Rabbit
Isotype:	IgG
Clonality:	Polyclonal
Immunogen:	The antiserum was produced against synthesized peptide derived from internal of human ZNF287.
Formulation:	Phosphate buffered saline (without Mg <sup>2+</sup> and Ca <sup>2+</sup> ), pH 7.4, 150mM NaCl, 0.02% sodium azide and 50% glycerol.
Concentration:	lot specific
Purification:	The antibody was affinity-purified from rabbit antiserum by affinity-chromatography using epitope-specific immunogen.
Conjugation:	Unconjugated
Storage:	Store at -20°C as received.
Stability:	Stable for 12 months from date of receipt.
Gene Name:	zinc finger protein 287
Database Link:	<a href="#">NP_065704</a> <a href="#">Entrez Gene 57336 Human</a> <a href="#">Q9HBT7</a>
Synonyms:	ZKSCAN13; ZSCAN45
Note:	ZNF287 antibody detects endogenous levels of total ZNF287 protein.
Protein Families:	Transcription Factors

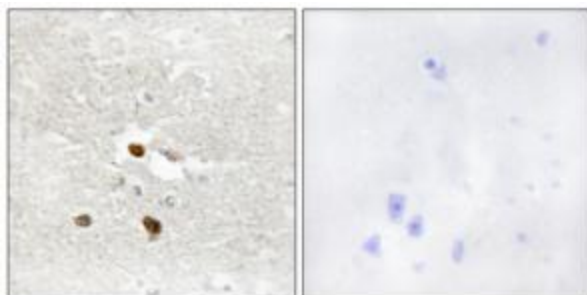


[View online »](#)

## Product images:



Western blot analysis of extracts from NIH-3T3 cells, using ZNF287 antibody. The lane on the right is treated with the synthesized peptide.



Immunohistochemistry analysis of paraffin-embedded human brain tissue using ZNF287 antibody. The picture on the right is treated with the synthesized peptide.