

Product datasheet for **TA315652**

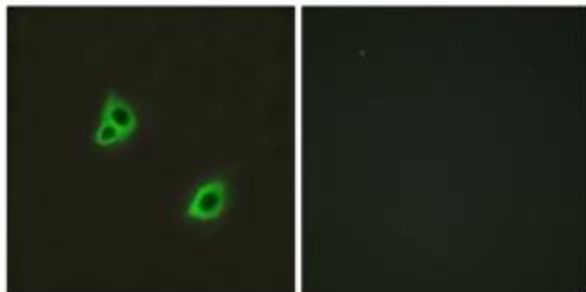
GPR126 (ADGRG6) Rabbit Polyclonal Antibody

Product data:

| | |
|-----------------------|---|
| Product Type: | Primary Antibodies |
| Applications: | IF |
| Recommended Dilution: | IF: 1:100~1:500, ELISA: 1:20000 |
| Reactivity: | Human, Mouse |
| Host: | Rabbit |
| Isotype: | IgG |
| Clonality: | Polyclonal |
| Immunogen: | The antiserum was produced against synthesized peptide derived from internal of human GPR126. |
| Formulation: | Phosphate buffered saline (without Mg ²⁺ and Ca ²⁺), pH 7.4, 150mM NaCl, 0.02% sodium azide and 50% glycerol. |
| Concentration: | lot specific |
| Purification: | The antibody was affinity-purified from rabbit antiserum by affinity-chromatography using epitope-specific immunogen. |
| Conjugation: | Unconjugated |
| Storage: | Store at -20°C as received. |
| Stability: | Stable for 12 months from date of receipt. |
| Gene Name: | adhesion G protein-coupled receptor G6 |
| Database Link: | NP_940971 Entrez Gene 215798 Mouse Entrez Gene 57211 Human Q86SQ4 |
| Synonyms: | APG1; DREG; GPR126; PS1TP2; STQTL1; VIGR |
| Note: | GPR126 antibody detects endogenous levels of total GPR126 protein. |
| Protein Families: | Druggable Genome, GPCR, Transmembrane |



[View online »](#)

Product images:

Immunofluorescence analysis of HUVEC cells, using GPR126 antibody. The picture on the right is treated with the synthesized peptide.