

## Product datasheet for **TA315648**

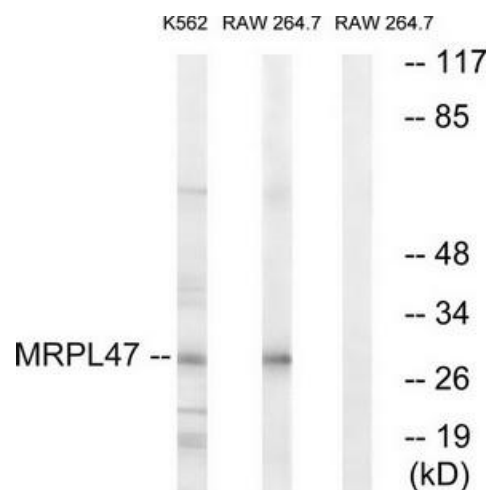
### MRPL47 Rabbit Polyclonal Antibody

#### Product data:

Product Type:	Primary Antibodies
Applications:	WB
Recommended Dilution:	WB: 1:500~1:3000, ELISA: 1:5000
Reactivity:	Human
Host:	Rabbit
Isotype:	IgG
Clonality:	Polyclonal
Immunogen:	The antiserum was produced against synthesized peptide derived from internal of human MRPL47.
Formulation:	Phosphate buffered saline (without Mg <sup>2+</sup> and Ca <sup>2+</sup> ), pH 7.4, 150mM NaCl, 0.02% sodium azide and 50% glycerol.
Concentration:	lot specific
Purification:	The antibody was affinity-purified from rabbit antiserum by affinity-chromatography using epitope-specific immunogen.
Conjugation:	Unconjugated
Storage:	Store at -20°C as received.
Stability:	Stable for 12 months from date of receipt.
Gene Name:	mitochondrial ribosomal protein L47
Database Link:	<a href="#">NP_065142</a> <a href="#">Entrez Gene 57129 Human</a> <a href="#">Q9HD33</a>
Synonyms:	CGI-204; L47mt; MRP-L47; NCM1
Note:	MRPL47 antibody detects endogenous levels of total MRPL47 protein.



[View online »](#)

**Product images:**


Western blot analysis of extracts from K562 cells and RAW264.7 cells, using MRPL47 antibody. The lane on the right is treated with the synthesized peptide.