

Product datasheet for **TA315647**

GPR92 (LPAR5) Rabbit Polyclonal Antibody

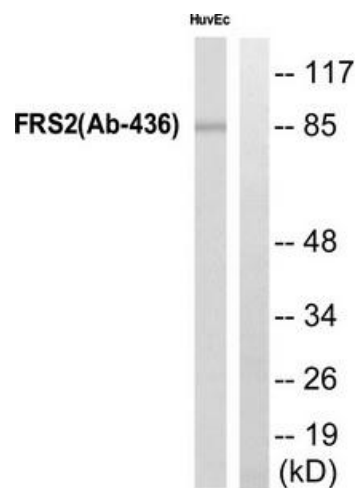
Product data:

Product Type:	Primary Antibodies
Applications:	WB
Recommended Dilution:	WB: 1:500~1:3000, ELISA: 1:10000
Reactivity:	Human, Mouse
Host:	Rabbit
Isotype:	IgG
Clonality:	Polyclonal
Immunogen:	The antiserum was produced against synthesized peptide derived from C-terminal of human FRS2.
Formulation:	Phosphate buffered saline (without Mg ²⁺ and Ca ²⁺), pH 7.4, 150mM NaCl, 0.02% sodium azide and 50% glycerol.
Concentration:	lot specific
Purification:	The antibody was affinity-purified from rabbit antiserum by affinity-chromatography using epitope-specific immunogen.
Conjugation:	Unconjugated
Storage:	Store at -20°C as received.
Stability:	Stable for 12 months from date of receipt.
Gene Name:	lysophosphatidic acid receptor 5
Database Link:	NP_001136433 Entrez Gene 381810 Mouse Entrez Gene 57121 Human Q9H1C0
Synonyms:	GPR92; GPR93; KPG_010; LPA5
Note:	FRS2 (Ab-436) Antibody detects endogenous levels of total FRS2 protein
Protein Families:	Druggable Genome, GPCR, Transmembrane



[View online »](#)

Product images:



Western blot analysis of extracts from HUVEC cells, using FRS2 (Ab-436) Antibody. The lane on the right is treated with the synthesized peptide.