

Product datasheet for **TA315640**

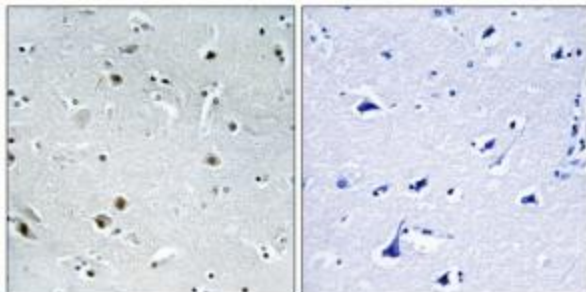
DDX24 Rabbit Polyclonal Antibody

Product data:

Product Type:	Primary Antibodies
Applications:	IHC
Recommended Dilution:	IHC: 1:50~1:100, ELISA: 1:40000
Reactivity:	Human
Host:	Rabbit
Isotype:	IgG
Clonality:	Polyclonal
Immunogen:	The antiserum was produced against synthesized peptide derived from internal of human DDX24.
Formulation:	Phosphate buffered saline (without Mg ²⁺ and Ca ²⁺), pH 7.4, 150mM NaCl, 0.02% sodium azide and 50% glycerol.
Concentration:	lot specific
Purification:	The antibody was affinity-purified from rabbit antiserum by affinity-chromatography using epitope-specific immunogen.
Conjugation:	Unconjugated
Storage:	Store at -20°C as received.
Stability:	Stable for 12 months from date of receipt.
Gene Name:	DEAD-box helicase 24
Database Link:	NP_065147 Entrez Gene 57062 Human Q9GZR7
Synonyms:	DEAD; DEAD (Asp-Glu-Ala-Asp) box polypeptide 24; H (Asp-Glu-Ala-Asp; His) box polypeptide 24; S. cerevisiae CHL1-like helicase
Note:	DDX24 antibody detects endogenous levels of total DDX24 protein.



[View online »](#)

Product images:

Immunohistochemistry analysis of paraffin-embedded human brain tissue using DDX24 antibody. The picture on the right is treated with the synthesized peptide.