

## Product datasheet for **TA315639**

### CHRNA10 Rabbit Polyclonal Antibody

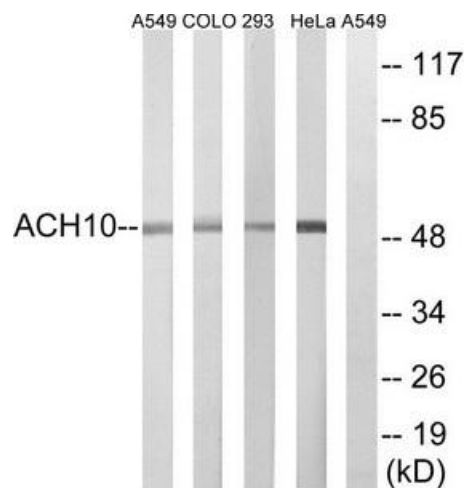
#### Product data:

Product Type:	Primary Antibodies
Applications:	WB
Recommended Dilution:	WB: 1:500~1:3000, ELISA: 1:20000
Reactivity:	Human, Mouse, Rat
Host:	Rabbit
Isotype:	IgG
Clonality:	Polyclonal
Immunogen:	The antiserum was produced against synthesized peptide derived from C-terminal of human CHRNA10.
Formulation:	Phosphate buffered saline (without Mg <sup>2+</sup> and Ca <sup>2+</sup> ), pH 7.4, 150mM NaCl, 0.02% sodium azide and 50% glycerol.
Concentration:	lot specific
Purification:	The antibody was affinity-purified from rabbit antiserum by affinity-chromatography using epitope-specific immunogen.
Conjugation:	Unconjugated
Storage:	Store at -20°C as received.
Stability:	Stable for 12 months from date of receipt.
Gene Name:	cholinergic receptor nicotinic alpha 10 subunit
Database Link:	<a href="#">NP_065135</a> <a href="#">Entrez Gene 64574 Rat</a> <a href="#">Entrez Gene 504186 Mouse</a> <a href="#">Entrez Gene 57053 Human</a> <a href="#">Q9GZZ6</a>
Synonyms:	alpha 10; alpha polypeptide 10; cholinergic receptor; nicotinic; OTTHUMP00000013620
Note:	CHRNA10 antibody detects endogenous levels of total CHRNA10 protein.
Protein Families:	Druggable Genome, Ion Channels: Cys-loop Receptors, Transmembrane



[View online »](#)

## Product images:



Western blot analysis of extracts from A549 cells, COLO cells, HeLa cells and 293 cells, using CHRNA10 antibody. The lane on the right is treated with the synthesized peptide.