

Product datasheet for **TA315638**

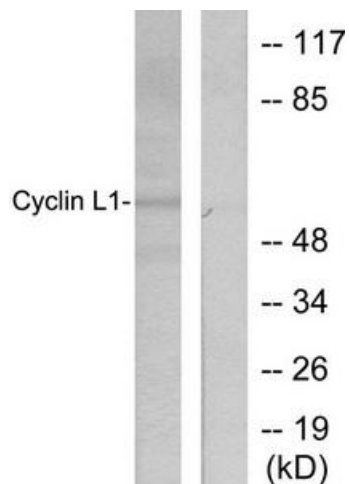
CCNL1 Rabbit Polyclonal Antibody

Product data:

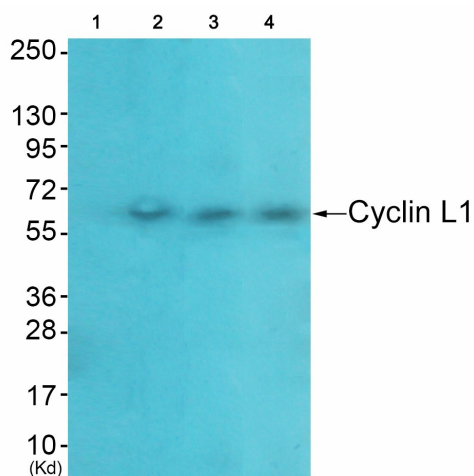
Product Type:	Primary Antibodies
Applications:	IHC, WB
Recommended Dilution:	WB: 1:500~1:3000, IHC: 1:50~1:100, ELISA: 1:10000
Reactivity:	Human, Mouse, Rat
Host:	Rabbit
Isotype:	IgG
Clonality:	Polyclonal
Immunogen:	The antiserum was produced against synthesized peptide derived from human Cyclin-L1.
Formulation:	Phosphate buffered saline (without Mg ²⁺ and Ca ²⁺), pH 7.4, 150mM NaCl, 0.02% sodium azide and 50% glycerol.
Concentration:	lot specific
Purification:	The antibody was affinity-purified from rabbit antiserum by affinity-chromatography using epitope-specific immunogen.
Conjugation:	Unconjugated
Storage:	Store at -20°C as received.
Stability:	Stable for 12 months from date of receipt.
Gene Name:	cyclin L1
Database Link:	NP_064703 Entrez Gene 56706 MouseEntrez Gene 114121 RatEntrez Gene 57018 Human Q9UK58
Synonyms:	ania-6a; ANIA6A; BM-001; PRO1073
Note:	Cyclin-L1 antibody detects endogenous levels of total Cyclin-L1 protein.
Protein Families:	Druggable Genome



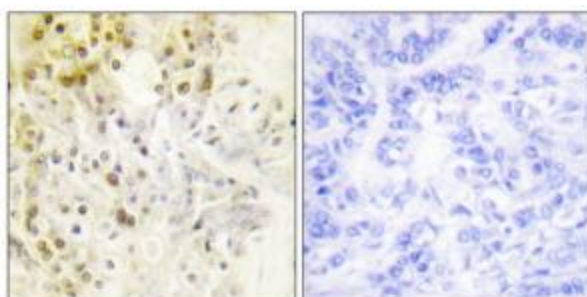
[View online »](#)

Product images:


Western blot analysis of extracts from HepG2 cells, using Cyclin-L1 antibody (#TA315638). The lane on the right is treated with the synthesized peptide.



Western blot analysis of extracts from HeLa cells (Lane 2), A549 cells (Lane 3) and HepG2 cells (Lane 4), using Cyclin-L1 Antibody. The lane on the left is treated with synthesized peptide.



Immunohistochemical analysis of paraffin-embedded human breast carcinoma tissue using Cyclin-L1 antibody (#TA315638). The picture on the right is treated with the synthesized peptide.