

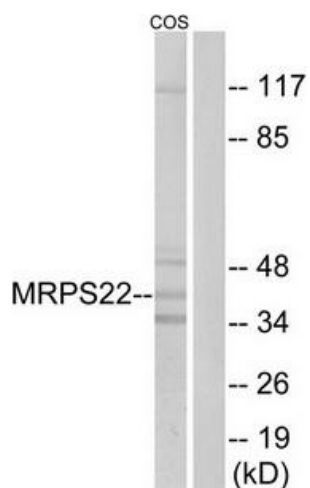
Product datasheet for **TA315635**

MRPS22 Rabbit Polyclonal Antibody

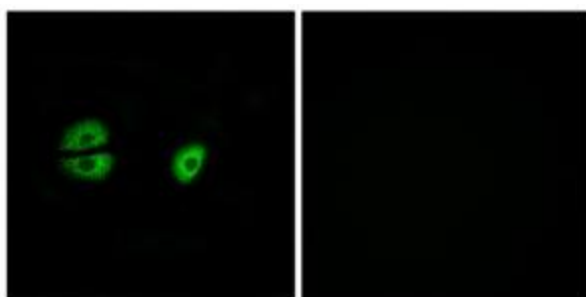
Product data:

Product Type:	Primary Antibodies
Applications:	IF, WB
Recommended Dilution:	WB: 1:500~1:3000, IF: 1:100~1:500, ELISA: 1:40000
Reactivity:	Human
Host:	Rabbit
Isotype:	IgG
Clonality:	Polyclonal
Immunogen:	The antiserum was produced against synthesized peptide derived from internal of human MRPS22.
Formulation:	Phosphate buffered saline (without Mg ²⁺ and Ca ²⁺), pH 7.4, 150mM NaCl, 0.02% sodium azide and 50% glycerol.
Concentration:	lot specific
Purification:	The antibody was affinity-purified from rabbit antiserum by affinity-chromatography using epitope-specific immunogen.
Conjugation:	Unconjugated
Storage:	Store at -20°C as received.
Stability:	Stable for 12 months from date of receipt.
Gene Name:	mitochondrial ribosomal protein S22
Database Link:	NP_064576 Entrez Gene 56945 Human P82650
Synonyms:	C3orf5; COXPD5; GIBT; GK002; MRP-S22; RPMS22
Note:	MRPS22 antibody detects endogenous levels of total MRPS22 protein.

[View online »](#)

Product images:

Western blot analysis of extracts from COS cells, using MRPS22 antibody. The lane on the right is treated with the synthesized peptide.



Immunofluorescence analysis of A549 cells, using MRPS22 antibody. The picture on the right is treated with the synthesized peptide.