

Product datasheet for **TA315634**

DUSP22 Rabbit Polyclonal Antibody

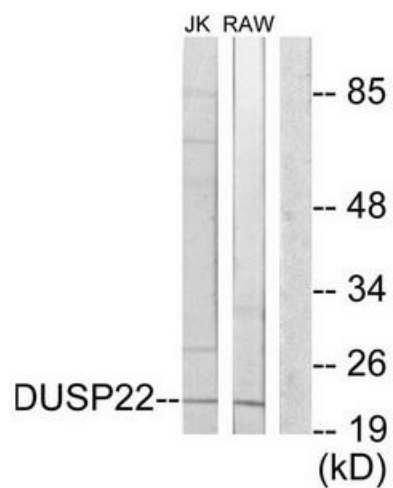
Product data:

Product Type:	Primary Antibodies
Applications:	WB
Recommended Dilution:	WB: 1:500~1:3000, ELISA: 1:5000
Reactivity:	Human, Mouse
Host:	Rabbit
Isotype:	IgG
Clonality:	Polyclonal
Immunogen:	The antiserum was produced against synthesized peptide derived from internal of human DUSP22.
Formulation:	Phosphate buffered saline (without Mg ²⁺ and Ca ²⁺), pH 7.4, 150mM NaCl, 0.02% sodium azide and 50% glycerol.
Concentration:	lot specific
Purification:	The antibody was affinity-purified from rabbit antiserum by affinity-chromatography using epitope-specific immunogen.
Conjugation:	Unconjugated
Storage:	Store at -20°C as received.
Stability:	Stable for 12 months from date of receipt.
Gene Name:	dual specificity phosphatase 22
Database Link:	NP_064570 Entrez Gene 105352 Mouse Entrez Gene 56940 Human Q9NRW4
Synonyms:	JKAP; JSP-1; JSP1; LMW-DSP2; LMWDSP2; MKP-x; MKPX; VHX
Note:	DUSP22 antibody detects endogenous levels of total DUSP22 protein.
Protein Families:	Druggable Genome, Phosphatase



[View online »](#)

Product images:



Western blot analysis of extracts from Jurkat cells and RAW264.7 cells, using DUSP22 antibody. The lane on the right is treated with the synthesized peptide.