

## Product datasheet for **TA315633**

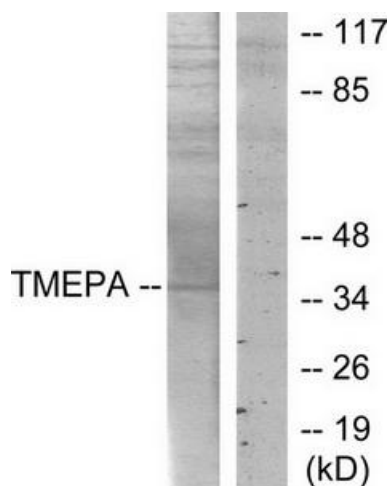
### TMEPAI (PMEPA1) Rabbit Polyclonal Antibody

#### Product data:

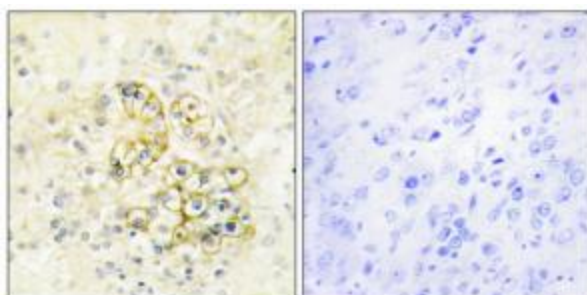
Product Type:	Primary Antibodies
Applications:	IF, IHC, WB
Recommended Dilution:	WB: 1:500~1:3000, IHC: 1:50~1:100, IF: 1:100~1:500, ELISA: 1:20000
Reactivity:	Human
Host:	Rabbit
Isotype:	IgG
Clonality:	Polyclonal
Immunogen:	The antiserum was produced against synthesized peptide derived from internal of human TMEPA.
Formulation:	Phosphate buffered saline (without Mg <sup>2+</sup> and Ca <sup>2+</sup> ), pH 7.4, 150mM NaCl, 0.02% sodium azide and 50% glycerol.
Concentration:	lot specific
Purification:	The antibody was affinity-purified from rabbit antiserum by affinity-chromatography using epitope-specific immunogen.
Conjugation:	Unconjugated
Storage:	Store at -20°C as received.
Stability:	Stable for 12 months from date of receipt.
Gene Name:	prostate transmembrane protein, androgen induced 1
Database Link:	<a href="#">NP_954640</a> <a href="#">Entrez Gene 56937 Human</a> <a href="#">Q969W9</a>
Synonyms:	STAG1; TMEPAI
Note:	TMEPA antibody detects endogenous levels of total TMEPA protein.
Protein Families:	Druggable Genome, Transmembrane



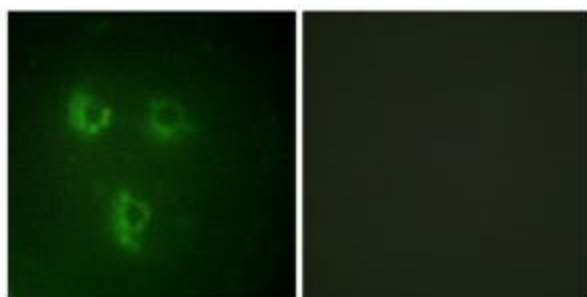
[View online »](#)

**Product images:**


Western blot analysis of extracts from HT-29 cells, using TMEPA antibody. The lane on the right is treated with the synthesized peptide.



Immunohistochemistry analysis of paraffin-embedded human prostate tissue using TMEPA antibody. The picture on the right is treated with the synthesized peptide.



Immunofluorescence analysis of HUVEC cells, using TMEPA antibody. The picture on the right is treated with the synthesized peptide.