

## Product datasheet for **TA315632**

### GPR108 Rabbit Polyclonal Antibody

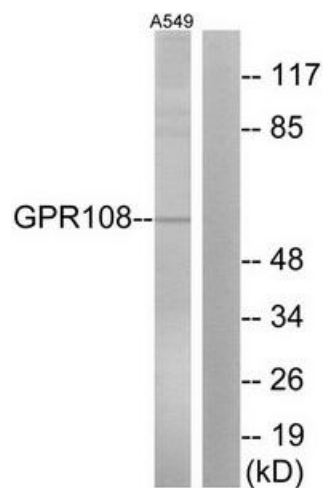
#### Product data:

Product Type:	Primary Antibodies
Applications:	IF, WB
Recommended Dilution:	WB: 1:500~1:3000, IF: 1:100~1:500, ELISA: 1:1000
Reactivity:	Human
Host:	Rabbit
Isotype:	IgG
Clonality:	Polyclonal
Immunogen:	The antiserum was produced against synthesized peptide derived from internal of human GP108.
Formulation:	Phosphate buffered saline (without Mg <sup>2+</sup> and Ca <sup>2+</sup> ), pH 7.4, 150mM NaCl, 0.02% sodium azide and 50% glycerol.
Concentration:	lot specific
Purification:	The antibody was affinity-purified from rabbit antiserum by affinity-chromatography using epitope-specific immunogen.
Conjugation:	Unconjugated
Storage:	Store at -20°C as received.
Stability:	Stable for 12 months from date of receipt.
Gene Name:	G protein-coupled receptor 108
Database Link:	<a href="#">NP_001073921</a> <a href="#">Entrez Gene 56927 Human</a> <a href="#">Q9NPR9</a>
Synonyms:	LUSTR2
Note:	GP108 antibody detects endogenous levels of total GP108 protein.
Protein Families:	Druggable Genome, Transmembrane

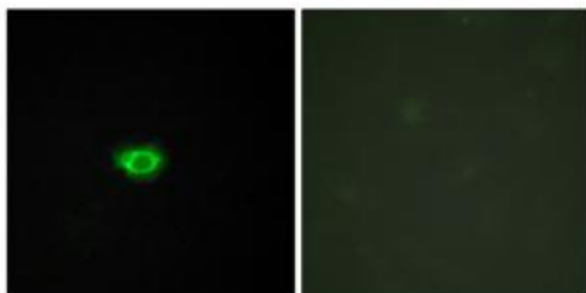


[View online »](#)

## Product images:



Western blot analysis of extracts from A549 cells, using GP108 antibody. The lane on the right is treated with the synthesized peptide.



Immunofluorescence analysis of HUVEC cells, using GP108 antibody. The picture on the right is treated with the synthesized peptide.