

Product datasheet for **TA315630**

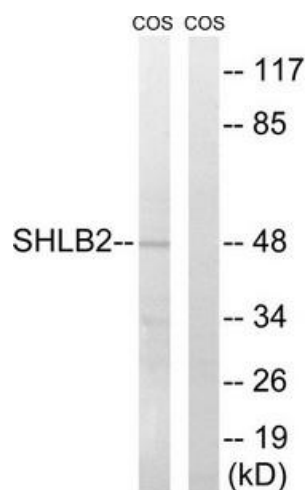
SH3GLB2 Rabbit Polyclonal Antibody

Product data:

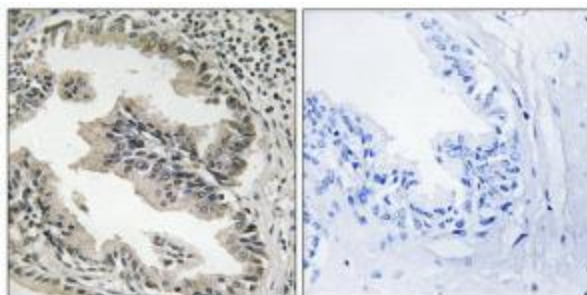
Product Type:	Primary Antibodies
Applications:	IHC, WB
Recommended Dilution:	WB: 1:500~1:3000, IHC: 1:50~1:100, ELISA: 1:40000
Reactivity:	Human, Mouse, Rat
Host:	Rabbit
Isotype:	IgG
Clonality:	Polyclonal
Immunogen:	The antiserum was produced against synthesized peptide derived from internal of human SH3GLB2.
Formulation:	Phosphate buffered saline (without Mg ²⁺ and Ca ²⁺), pH 7.4, 150mM NaCl, 0.02% sodium azide and 50% glycerol.
Concentration:	lot specific
Purification:	The antibody was affinity-purified from rabbit antiserum by affinity-chromatography using epitope-specific immunogen.
Conjugation:	Unconjugated
Storage:	Store at -20°C as received.
Stability:	Stable for 12 months from date of receipt.
Gene Name:	SH3 domain containing GRB2 like endophilin B2
Database Link:	NP_064530 Entrez Gene 227700 MouseEntrez Gene 311848 RatEntrez Gene 56904 Human Q9NR46
Synonyms:	PP6569; PP9455; RRIG1
Note:	SH3GLB2 antibody detects endogenous levels of total SH3GLB2 protein.
Protein Pathways:	Endocytosis



[View online »](#)

Product images:

Western blot analysis of extracts from COS cells, using SH3GLB2 antibody. The lane on the right is treated with the synthesized peptide.



Immunohistochemistry analysis of paraffin-embedded human prostate carcinoma tissue using SH3GLB2 antibody. The picture on the right is treated with the synthesized peptide.