

## Product datasheet for **TA315621**

### MUC13 Rabbit Polyclonal Antibody

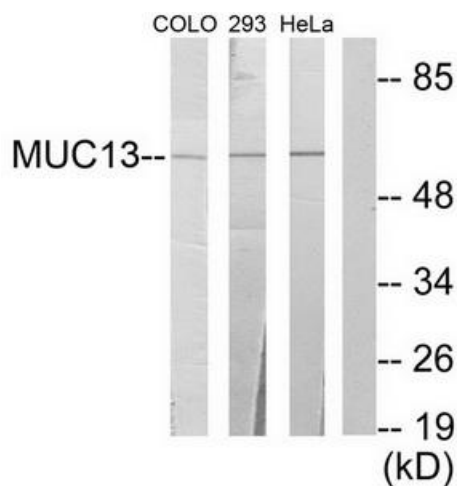
#### Product data:

Product Type:	Primary Antibodies
Applications:	IF, IHC, WB
Recommended Dilution:	WB: 1:500~1:3000, IHC: 1:50~1:100, IF: 1:100~1:500, ELISA: 1:5000
Reactivity:	Human
Host:	Rabbit
Isotype:	IgG
Clonality:	Polyclonal
Immunogen:	The antiserum was produced against synthesized peptide derived from internal of human MUC13.
Formulation:	Phosphate buffered saline (without Mg <sup>2+</sup> and Ca <sup>2+</sup> ), pH 7.4, 150mM NaCl, 0.02% sodium azide and 50% glycerol.
Concentration:	lot specific
Purification:	The antibody was affinity-purified from rabbit antiserum by affinity-chromatography using epitope-specific immunogen.
Conjugation:	Unconjugated
Storage:	Store at -20°C as received.
Stability:	Stable for 12 months from date of receipt.
Gene Name:	mucin 13, cell surface associated
Database Link:	<a href="#">NP_149038</a> <a href="#">Entrez Gene 56667 Human</a> <a href="#">Q9H3R2</a>
Synonyms:	DRCC1; MUC-13
Note:	MUC13 antibody detects endogenous levels of total MUC13 protein.
Protein Families:	Transmembrane

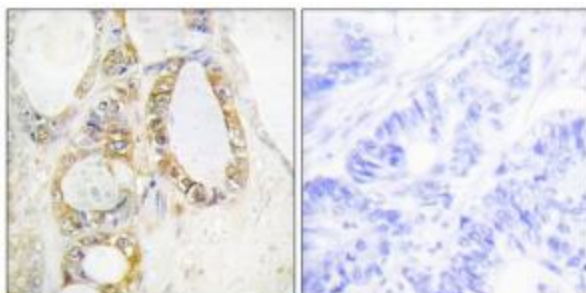


[View online »](#)

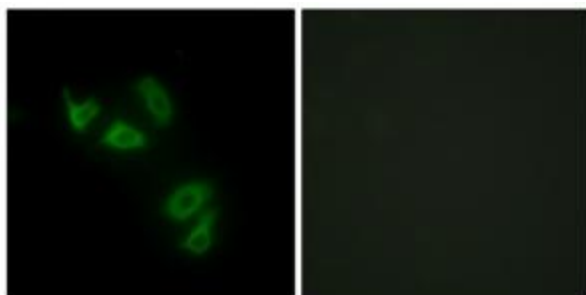
## Product images:



Western blot analysis of extracts from COLO cells, 293 cells and HeLa cells, using MUC13 antibody. The lane on the right is treated with the synthesized peptide.



Immunohistochemistry analysis of paraffin-embedded human colon carcinoma tissue using MUC13 antibody. The picture on the right is treated with the synthesized peptide.



Immunofluorescence analysis of HepG2 cells, using MUC13 antibody. The picture on the right is treated with the synthesized peptide.