

Product datasheet for **TA315619**

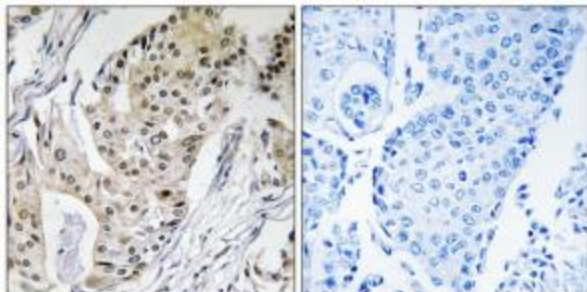
POLE4 Rabbit Polyclonal Antibody

Product data:

Product Type:	Primary Antibodies
Applications:	IHC
Recommended Dilution:	IHC: 1:50~1:100, ELISA: 1:40000
Reactivity:	Human, Mouse
Host:	Rabbit
Isotype:	IgG
Clonality:	Polyclonal
Immunogen:	The antiserum was produced against synthesized peptide derived from internal of human POLE4.
Formulation:	Phosphate buffered saline (without Mg ²⁺ and Ca ²⁺), pH 7.4, 150mM NaCl, 0.02% sodium azide and 50% glycerol.
Concentration:	lot specific
Purification:	The antibody was affinity-purified from rabbit antiserum by affinity-chromatography using epitope-specific immunogen.
Conjugation:	Unconjugated
Storage:	Store at -20°C as received.
Stability:	Stable for 12 months from date of receipt.
Gene Name:	polymerase (DNA) epsilon 4, accessory subunit
Database Link:	NP_063949 Entrez Gene 66979 Mouse Entrez Gene 56655 Human Q9NR33
Synonyms:	p12; YHHQ1
Note:	POLE4 antibody detects endogenous levels of total POLE4 protein.
Protein Pathways:	Base excision repair, DNA replication, Metabolic pathways, Nucleotide excision repair, Purine metabolism, Pyrimidine metabolism



[View online »](#)

Product images:

Immunohistochemistry analysis of paraffin-embedded human breast carcinoma tissue using POLE4 antibody. The picture on the right is treated with the synthesized peptide.