

Product datasheet for **TA315617**

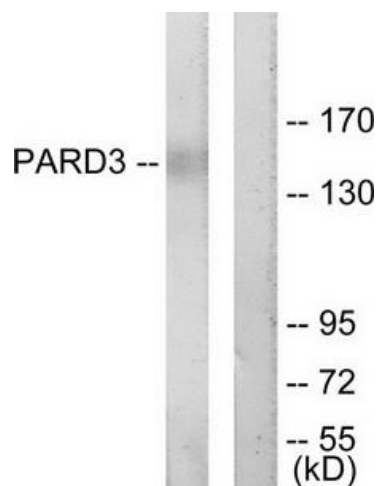
PARD3 Rabbit Polyclonal Antibody

Product data:

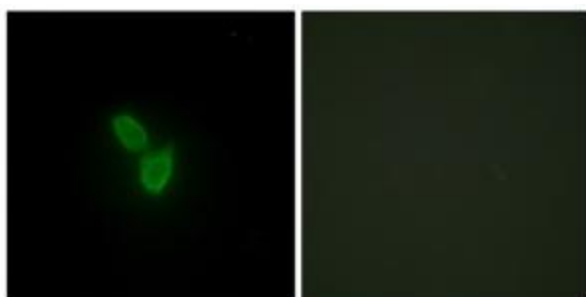
Product Type:	Primary Antibodies
Applications:	IF, WB
Recommended Dilution:	WB: 1:500~1:3000, IF: 1:100~1:500, ELISA: 1:20000
Reactivity:	Human, Mouse, Rat
Host:	Rabbit
Isotype:	IgG
Clonality:	Polyclonal
Immunogen:	The antiserum was produced against synthesized peptide derived from internal of human PARD3.
Formulation:	Phosphate buffered saline (without Mg ²⁺ and Ca ²⁺), pH 7.4, 150mM NaCl, 0.02% sodium azide and 50% glycerol.
Concentration:	lot specific
Purification:	The antibody was affinity-purified from rabbit antiserum by affinity-chromatography using epitope-specific immunogen.
Conjugation:	Unconjugated
Storage:	Store at -20°C as received.
Stability:	Stable for 12 months from date of receipt.
Gene Name:	par-3 family cell polarity regulator
Database Link:	NP_001171714 Entrez Gene 81918 Rat Entrez Gene 93742 Mouse Entrez Gene 56288 Human Q8TEW0
Synonyms:	ASIP; Baz; PAR3; PAR3alpha; PARD-3; PARD3A; PPP1R118; SE2-5L16; SE2-5LT1; SE2-5T2
Note:	PARD3 antibody detects endogenous levels of total PARD3 protein.
Protein Pathways:	Adherens junction, Chemokine signaling pathway, Endocytosis, Neuroactive ligand-receptor interaction, Tight junction



[View online »](#)

Product images:

Western blot analysis of extracts from COLO205 cells, using PARD3 antibody. The lane on the right is treated with the synthesized peptide.



Immunofluorescence analysis of HepG2 cells, using PARD3 antibody. The picture on the right is treated with the synthesized peptide.