

Product datasheet for **TA315611**

LIM domain only 3 (LMO3) Rabbit Polyclonal Antibody

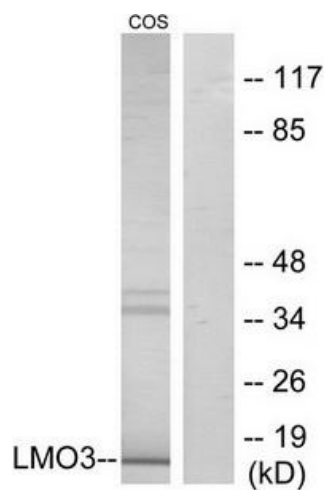
Product data:

Product Type:	Primary Antibodies
Applications:	WB
Recommended Dilution:	WB: 1:500~1:3000, ELISA: 1:10000
Reactivity:	Human, Mouse, Rat
Host:	Rabbit
Isotype:	IgG
Clonality:	Polyclonal
Immunogen:	The antiserum was produced against synthesized peptide derived from internal of human LMO3.
Formulation:	Phosphate buffered saline (without Mg ²⁺ and Ca ²⁺), pH 7.4, 150mM NaCl, 0.02% sodium azide and 50% glycerol.
Concentration:	lot specific
Purification:	The antibody was affinity-purified from rabbit antiserum by affinity-chromatography using epitope-specific immunogen.
Conjugation:	Unconjugated
Storage:	Store at -20°C as received.
Stability:	Stable for 12 months from date of receipt.
Gene Name:	LIM domain only 3
Database Link:	NP_001001395 Entrez Gene 109593 MouseEntrez Gene 497798 RatEntrez Gene 55885 Human Q8TAP4
Synonyms:	RBTN3; RBTNL2; Rhom-3; RHOM3
Note:	LMO3 antibody detects endogenous levels of total LMO3 protein.
Protein Families:	Transcription Factors



[View online »](#)

Product images:



Western blot analysis of extracts from COS-7 cells, using LMO3 antibody. The lane on the right is treated with the synthesized peptide.