

Product datasheet for **TA315609**

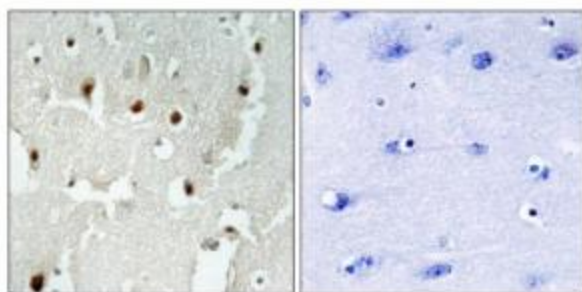
TReP132 (TRERF1) Rabbit Polyclonal Antibody

Product data:

Product Type:	Primary Antibodies
Applications:	IHC
Recommended Dilution:	IHC: 1:50~1:100, ELISA: 1:1000
Reactivity:	Human, Mouse
Host:	Rabbit
Isotype:	IgG
Clonality:	Polyclonal
Immunogen:	The antiserum was produced against synthesized peptide derived from internal of human TREF1.
Formulation:	Phosphate buffered saline (without Mg ²⁺ and Ca ²⁺), pH 7.4, 150mM NaCl, 0.02% sodium azide and 50% glycerol.
Concentration:	lot specific
Purification:	The antibody was affinity-purified from rabbit antiserum by affinity-chromatography using epitope-specific immunogen.
Conjugation:	Unconjugated
Storage:	Store at -20°C as received.
Stability:	Stable for 12 months from date of receipt.
Gene Name:	transcriptional regulating factor 1
Database Link:	NP_277037 Entrez Gene 224829 Mouse Entrez Gene 55809 Human Q96PN7
Synonyms:	BCAR2; dj139D8.5; HSA277276; RAPA; TReP-132; TREP132
Note:	TREF1 antibody detects endogenous levels of total TREF1 protein.
Protein Families:	Druggable Genome, Transcription Factors



[View online »](#)

Product images:

Peptide

-

+

Immunohistochemistry analysis of paraffin-embedded human brain tissue, using TREF1 antibody. The picture on the right is treated with the synthesized peptide.