

Product datasheet for **TA315607**

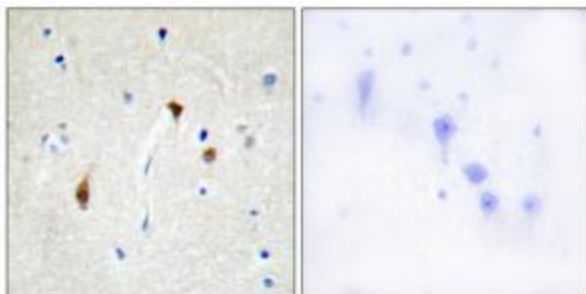
Hairless (HR) Rabbit Polyclonal Antibody

Product data:

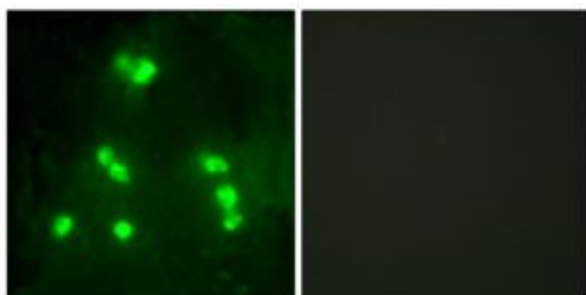
Product Type:	Primary Antibodies
Applications:	IF, IHC
Recommended Dilution:	IHC: 1:50~1:100, IF: 1:100~1:500, ELISA: 1:10000
Reactivity:	Human
Host:	Rabbit
Isotype:	IgG
Clonality:	Polyclonal
Immunogen:	The antiserum was produced against synthesized peptide derived from internal of human HAIR.
Formulation:	Phosphate buffered saline (without Mg ²⁺ and Ca ²⁺), pH 7.4, 150mM NaCl, 0.02% sodium azide and 50% glycerol.
Concentration:	lot specific
Purification:	The antibody was affinity-purified from rabbit antiserum by affinity-chromatography using epitope-specific immunogen.
Conjugation:	Unconjugated
Storage:	Store at -20°C as received.
Stability:	Stable for 12 months from date of receipt.
Gene Name:	hair growth associated
Database Link:	NP_005135 Entrez Gene 55806 Human O43593
Synonyms:	ALUNC; AU; HSA277165; HYPT4; MUHH; MUHH1
Note:	HAIR antibody detects endogenous levels of total HAIR protein.
Protein Families:	Druggable Genome, Transcription Factors



[View online »](#)

Product images:

Immunohistochemistry analysis of paraffin-embedded human brain tissue, using HAIR antibody. The picture on the right is treated with the synthesized peptide.



Immunofluorescence analysis of A549 cells, using HAIR antibody. The picture on the right is treated with the synthesized peptide.