

Product datasheet for **TA315597**

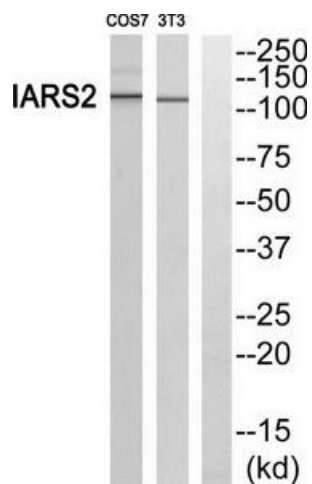
IARS2 Rabbit Polyclonal Antibody

Product data:

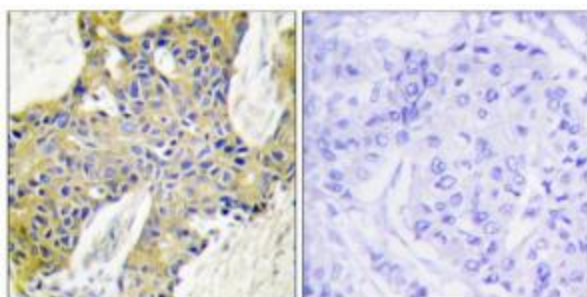
Product Type:	Primary Antibodies
Applications:	IF, IHC, WB
Recommended Dilution:	WB: 1:500~1:3000, IHC: 1:50~1:100, IF: 1:100~1:500, ELISA: 1:1000
Reactivity:	Human, Mouse
Host:	Rabbit
Isotype:	IgG
Clonality:	Polyclonal
Immunogen:	The antiserum was produced against synthesized peptide derived from internal of human IARS2.
Formulation:	Phosphate buffered saline (without Mg ²⁺ and Ca ²⁺), pH 7.4, 150mM NaCl, 0.02% sodium azide and 50% glycerol.
Concentration:	lot specific
Purification:	The antibody was affinity-purified from rabbit antiserum by affinity-chromatography using epitope-specific immunogen.
Conjugation:	Unconjugated
Storage:	Store at -20°C as received.
Stability:	Stable for 12 months from date of receipt.
Gene Name:	isoleucyl-tRNA synthetase 2, mitochondrial
Database Link:	NP_060530 Entrez Gene 381314 Mouse Entrez Gene 55699 Human Q9NSE4
Synonyms:	CAGSSS; ILERS
Note:	IARS2 antibody detects endogenous levels of total IARS2 protein.
Protein Families:	Druggable Genome
Protein Pathways:	Aminoacyl-tRNA biosynthesis, Valine, leucine and isoleucine biosynthesis



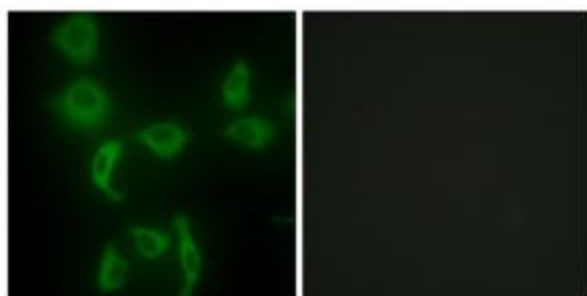
[View online »](#)

Product images:


Western blot analysis of extracts from RAW264.7 cells and COS-7 cells, using IARS2 antibody. The lane on the right is treated with the synthesized peptide.



Immunohistochemistry analysis of paraffin-embedded human breast carcinoma tissue using IARS2 antibody. The picture on the right is treated with the synthesized peptide.



Immunofluorescence analysis of HepG2 cells, using IARS2 antibody. The picture on the right is treated with the synthesized peptide.