

Product datasheet for **TA315591**

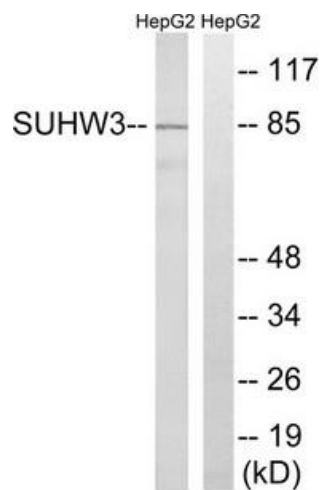
ZNF280C Rabbit Polyclonal Antibody

Product data:

Product Type:	Primary Antibodies
Applications:	WB
Recommended Dilution:	WB: 1:500~1:3000, ELISA: 1:40000
Reactivity:	Human
Host:	Rabbit
Isotype:	IgG
Clonality:	Polyclonal
Immunogen:	The antiserum was produced against synthesized peptide derived from internal of human ZNF280C.
Formulation:	Phosphate buffered saline (without Mg ²⁺ and Ca ²⁺), pH 7.4, 150mM NaCl, 0.02% sodium azide and 50% glycerol.
Concentration:	lot specific
Purification:	The antibody was affinity-purified from rabbit antiserum by affinity-chromatography using epitope-specific immunogen.
Conjugation:	Unconjugated
Storage:	Store at -20°C as received.
Stability:	Stable for 12 months from date of receipt.
Gene Name:	zinc finger protein 280C
Database Link:	NP_060136 Entrez Gene 55609 Human Q8ND82
Synonyms:	SUHW3; ZNF633
Note:	ZNF280C antibody detects endogenous levels of total ZNF280C protein.



[View online »](#)

Product images:

Western blot analysis of extracts from HepG2 cells, using ZNF280C antibody. The lane on the right is treated with the synthesized peptide.