

Product datasheet for **TA315590**

SOX6 Rabbit Polyclonal Antibody

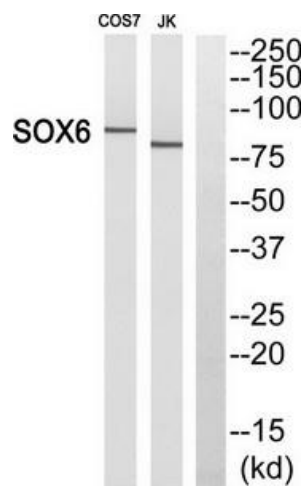
Product data:

Product Type:	Primary Antibodies
Applications:	WB
Recommended Dilution:	WB: 1:500~1:3000, ELISA: 1:5000
Reactivity:	Human, Mouse, Rat
Host:	Rabbit
Isotype:	IgG
Clonality:	Polyclonal
Immunogen:	The antiserum was produced against synthesized peptide derived from N-terminal of human SOX6.
Formulation:	Phosphate buffered saline (without Mg ²⁺ and Ca ²⁺), pH 7.4, 150mM NaCl, 0.02% sodium azide and 50% glycerol.
Concentration:	lot specific
Purification:	The antibody was affinity-purified from rabbit antiserum by affinity-chromatography using epitope-specific immunogen.
Conjugation:	Unconjugated
Storage:	Store at -20°C as received.
Stability:	Stable for 12 months from date of receipt.
Gene Name:	SRY-box 6
Database Link:	NP_001139283 Entrez Gene 20679 Mouse Entrez Gene 293165 Rat Entrez Gene 55553 Human P35712
Synonyms:	HSSOX6; SOXD
Note:	SOX6 antibody detects endogenous levels of total SOX6 protein.
Protein Families:	Transcription Factors



[View online »](#)

Product images:



Western blot analysis of extracts from Jurkat cells, using SOX6 antibody. The lane on the right is treated with the synthesized peptide.