

Product datasheet for **TA315589**

SVOP Rabbit Polyclonal Antibody

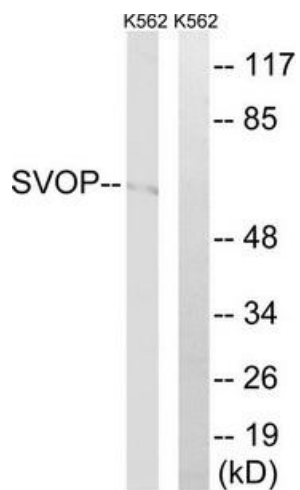
Product data:

Product Type:	Primary Antibodies
Applications:	WB
Recommended Dilution:	WB: 1:500~1:3000, ELISA: 1:40000
Reactivity:	Human, Mouse, Rat
Host:	Rabbit
Isotype:	IgG
Clonality:	Polyclonal
Immunogen:	The antiserum was produced against synthesized peptide derived from internal of human SVOP.
Formulation:	Phosphate buffered saline (without Mg ²⁺ and Ca ²⁺), pH 7.4, 150mM NaCl, 0.02% sodium azide and 50% glycerol.
Concentration:	lot specific
Purification:	The antibody was affinity-purified from rabbit antiserum by affinity-chromatography using epitope-specific immunogen.
Conjugation:	Unconjugated
Storage:	Store at -20°C as received.
Stability:	Stable for 12 months from date of receipt.
Gene Name:	SV2 related protein
Database Link:	NP_061181 Entrez Gene 68666 Mouse Entrez Gene 171442 Rat Entrez Gene 55530 Human Q8N4V2
Synonyms:	DKFZp761H039
Note:	SVOP antibody detects endogenous levels of total SVOP protein.
Protein Families:	Transmembrane



[View online »](#)

Product images:



Western blot analysis of extracts from K562 cells, using SVOP antibody. The lane on the right is treated with the synthesized peptide.