

## Product datasheet for **TA315587**

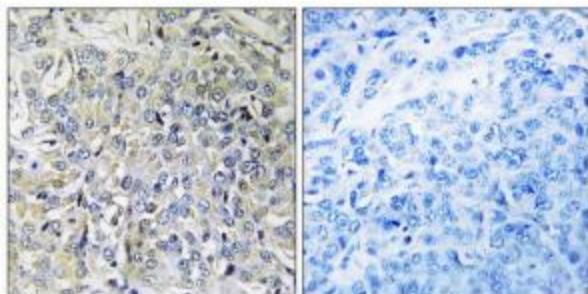
### CSGALNACT2 Rabbit Polyclonal Antibody

#### Product data:

Product Type:	Primary Antibodies
Applications:	IHC
Recommended Dilution:	IHC: 1:50~1:100, ELISA: 1:5000
Reactivity:	Human, Mouse
Host:	Rabbit
Isotype:	IgG
Clonality:	Polyclonal
Immunogen:	The antiserum was produced against synthesized peptide derived from internal of human CSGALNACT2.
Formulation:	Phosphate buffered saline (without Mg <sup>2+</sup> and Ca <sup>2+</sup> ), pH 7.4, 150mM NaCl, 0.02% sodium azide and 50% glycerol.
Concentration:	lot specific
Purification:	The antibody was affinity-purified from rabbit antiserum by affinity-chromatography using epitope-specific immunogen.
Conjugation:	Unconjugated
Storage:	Store at -20°C as received.
Stability:	Stable for 12 months from date of receipt.
Gene Name:	chondroitin sulfate N-acetylgalactosaminyltransferase 2
Database Link:	<a href="#">NP_061060</a> <a href="#">Entrez Gene 78752 Mouse</a> <a href="#">Entrez Gene 55454 Human</a> <a href="#">Q8N6G5</a>
Synonyms:	beta4GalNAcT; ChGn-2; CHGN2; GALNACT-2; GALNACT2; PRO0082
Note:	CSGALNACT2 antibody detects endogenous levels of total CSGALNACT2 protein.
Protein Families:	Transmembrane
Protein Pathways:	Chondroitin sulfate biosynthesis, Metabolic pathways



[View online »](#)

**Product images:**

Immunohistochemistry analysis of paraffin-embedded human breast carcinoma tissue using CSGALNACT2 antibody. The picture on the right is treated with the synthesized peptide.