

Product datasheet for **TA315585**

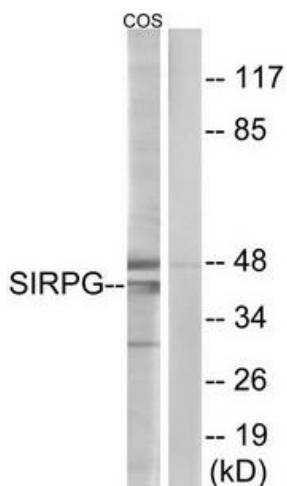
SIRPG Rabbit Polyclonal Antibody

Product data:

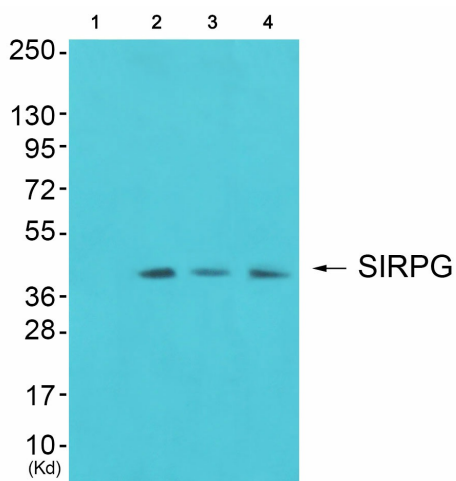
Product Type:	Primary Antibodies
Applications:	WB
Recommended Dilution:	WB: 1:500~1:3000, ELISA: 1:10000
Reactivity:	Human
Host:	Rabbit
Isotype:	IgG
Clonality:	Polyclonal
Immunogen:	The antiserum was produced against synthesized peptide derived from internal of human SIRPG.
Formulation:	Phosphate buffered saline (without Mg ²⁺ and Ca ²⁺), pH 7.4, 150mM NaCl, 0.02% sodium azide and 50% glycerol.
Concentration:	lot specific
Purification:	The antibody was affinity-purified from rabbit antiserum by affinity-chromatography using epitope-specific immunogen.
Conjugation:	Unconjugated
Storage:	Store at -20°C as received.
Stability:	Stable for 12 months from date of receipt.
Gene Name:	signal regulatory protein gamma
Database Link:	NP_001034597 Entrez Gene 55423 Human Q9P1W8
Synonyms:	bA77C3.1; CD172g; SIRP-B2; SIRPB2; SIRPgamma
Note:	SIRPG antibody detects endogenous levels of total SIRPG protein.
Protein Families:	Druggable Genome, Transmembrane



[View online »](#)

Product images:


Western blot analysis of extracts from COS cells, using SIRPG antibody. The lane on the right is treated with the synthesized peptide.



Western blot analysis of extracts from cos-7 cells (Lane 2), JK cells (Lane 3) and 3T3 cells (Lane 4), using SIRPG Antibody. The lane on the left is treated with synthesized peptide.