

Product datasheet for **TA315581**

Phytoceramidase (ACER3) Rabbit Polyclonal Antibody

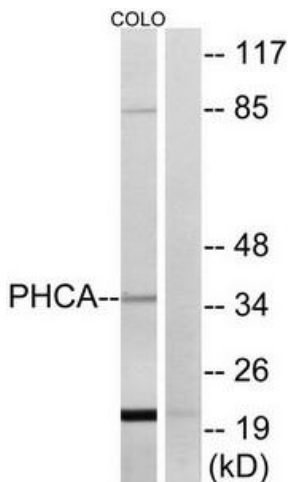
Product data:

Product Type:	Primary Antibodies
Applications:	IF, IHC, WB
Recommended Dilution:	WB: 1:500~1:3000, IHC: 1:50~1:100, IF: 1:100~1:500, ELISA: 1:40000
Reactivity:	Human, Mouse
Host:	Rabbit
Isotype:	IgG
Clonality:	Polyclonal
Immunogen:	The antiserum was produced against synthesized peptide derived from internal of human PHCA.
Formulation:	Phosphate buffered saline (without Mg ²⁺ and Ca ²⁺), pH 7.4, 150mM NaCl, 0.02% sodium azide and 50% glycerol.
Concentration:	lot specific
Purification:	The antibody was affinity-purified from rabbit antiserum by affinity-chromatography using epitope-specific immunogen.
Conjugation:	Unconjugated
Storage:	Store at -20°C as received.
Stability:	Stable for 12 months from date of receipt.
Gene Name:	alkaline ceramidase 3
Database Link:	NP_060837 Entrez Gene 66190 Mouse Entrez Gene 55331 Human Q9NUN7
Synonyms:	APHC; PHCA
Note:	PHCA antibody detects endogenous levels of total PHCA protein.
Protein Families:	Transmembrane
Protein Pathways:	Sphingolipid metabolism

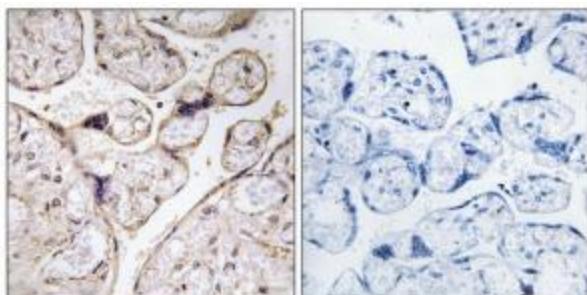


[View online »](#)

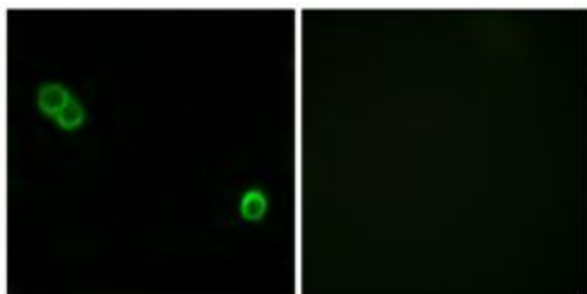
Product images:



Western blot analysis of extracts from COLO cells, using PHCA antibody. The lane on the right is treated with the synthesized peptide.



Immunohistochemistry analysis of paraffin-embedded human placenta tissue using PHCA antibody. The picture on the right is treated with the synthesized peptide.



Immunofluorescence analysis of MCF-7 cells, using PHCA antibody. The picture on the right is treated with the synthesized peptide.