

Product datasheet for **TA315577**

NEI3 (NEIL3) Rabbit Polyclonal Antibody

Product data:

Product Type:	Primary Antibodies
Applications:	WB
Recommended Dilution:	WB: 1:500~1:3000 ELISA: 1:40000
Reactivity:	Human, Mouse
Host:	Rabbit
Isotype:	IgG
Clonality:	Polyclonal
Immunogen:	The antiserum was produced against synthesized peptide derived from internal of human NEIL3.
Formulation:	Rabbit IgG in phosphate buffered saline (without Mg ²⁺ and Ca ²⁺), pH 7.4, 150mM NaCl, 0.02% sodium azide and 50% glycerol.
Concentration:	lot specific
Purification:	The antibody was affinity-purified from rabbit antiserum by affinity-chromatography using epitope-specific immunogen.
Conjugation:	Unconjugated
Storage:	Store at -20°C as received.
Stability:	Stable for 12 months from date of receipt.
Gene Name:	nei like DNA glycosylase 3
Database Link:	NP_060718 Entrez Gene 234258 Mouse Entrez Gene 55247 Human Q8TAT5
Background:	NEIL3 belongs to a class of DNA glycosylases homologous to the bacterial Fpg/Nei family. These glycosylases initiate the first step in base excision repair by cleaving bases damaged by reactive oxygen species and introducing a DNA strand break via the associated lyase reaction (Bandaru et al., 2002 [PubMed 12509226]). [supplied by OMIM, Mar 2008]
Synonyms:	FPG2; FPG2; hFPG2; hNEI3; NEI3; ZGRF3
Note:	NEIL3 antibody detects endogenous levels of total NEIL3 protein.

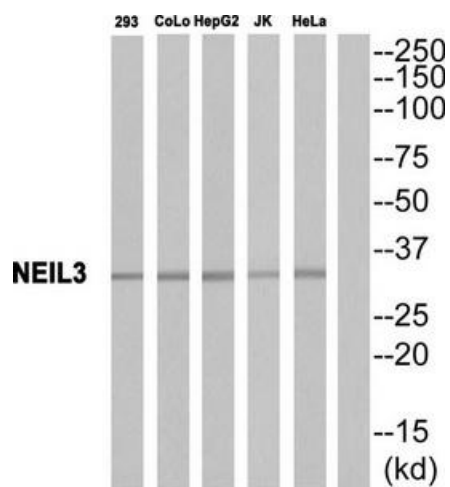


[View online »](#)

Protein Families: Druggable Genome

Protein Pathways: Base excision repair

Product images:



Western blot analysis of extracts from COLO cells, HUVEC cells, HepG2 cells and HeLa cells, using NEIL3 antibody. The lane on the right is treated with the synthesized peptide.