

Product datasheet for **TA315576**

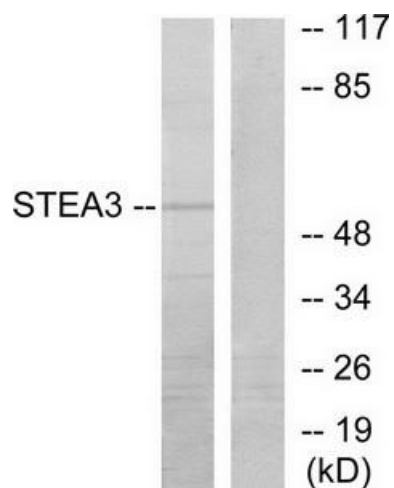
STEAP3 Rabbit Polyclonal Antibody

Product data:

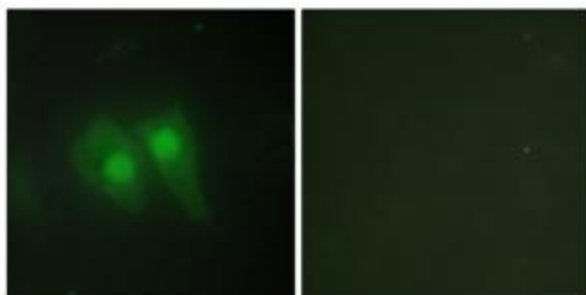
Product Type:	Primary Antibodies
Applications:	IF, WB
Recommended Dilution:	WB: 1:500~1:3000, IF: 1:100~1:500, ELISA: 1:10000
Reactivity:	Human, Mouse, Rat
Host:	Rabbit
Isotype:	IgG
Clonality:	Polyclonal
Immunogen:	The antiserum was produced against synthesized peptide derived from internal of human STEA3.
Formulation:	Phosphate buffered saline (without Mg ²⁺ and Ca ²⁺), pH 7.4, 150mM NaCl, 0.02% sodium azide and 50% glycerol.
Concentration:	lot specific
Purification:	The antibody was affinity-purified from rabbit antiserum by affinity-chromatography using epitope-specific immunogen.
Conjugation:	Unconjugated
Storage:	Store at -20°C as received.
Stability:	Stable for 12 months from date of receipt.
Gene Name:	STEAP3 metalloredutase
Database Link:	NP_001008410 Entrez Gene 68428 Mouse Entrez Gene 170824 Rat Entrez Gene 55240 Human Q658P3
Synonyms:	AHMIO2; dudlin-2; dudulin-2; pHyde; STMP3; TSAP6
Note:	STEA3 antibody detects endogenous levels of total STEA3 protein.
Protein Families:	Transmembrane
Protein Pathways:	p53 signaling pathway



[View online »](#)

Product images:

Western blot analysis of extracts from COLO205 cells, using STEAP3 antibody. The lane on the right is treated with the synthesized peptide.



Immunofluorescence analysis of HeLa cells, using STEAP3 antibody. The picture on the right is treated with the synthesized peptide.