

Product datasheet for **TA315569**

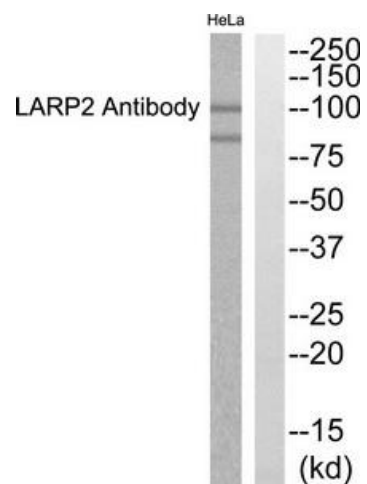
LARP2 (LARP1B) Rabbit Polyclonal Antibody

Product data:

Product Type:	Primary Antibodies
Applications:	WB
Recommended Dilution:	WB: 1:500~1:3000, ELISA: 1:10000
Reactivity:	Human, Mouse, Rat
Host:	Rabbit
Isotype:	IgG
Clonality:	Polyclonal
Immunogen:	The antiserum was produced against synthesized peptide derived from N-terminal of human LARP1B.
Formulation:	Phosphate buffered saline (without Mg ²⁺ and Ca ²⁺), pH 7.4, 150mM NaCl, 0.02% sodium azide and 50% glycerol.
Concentration:	lot specific
Purification:	The antibody was affinity-purified from rabbit antiserum by affinity-chromatography using epitope-specific immunogen.
Conjugation:	Unconjugated
Storage:	Store at -20°C as received.
Stability:	Stable for 12 months from date of receipt.
Gene Name:	La ribonucleoprotein domain family member 1B
Database Link:	NP_060548 Entrez Gene 214048 MouseEntrez Gene 310348 RatEntrez Gene 55132 Human Q659C4
Synonyms:	LARP2
Note:	LARP2 Antibody detects endogenous levels of total LARP1B protein



[View online »](#)

Product images:

Western blot analysis of extracts from Hela cells, using LARP2 Antibody. The lane on the right is treated with the synthesized peptide.