

Product datasheet for **TA315564**

ATG16L1 Rabbit Polyclonal Antibody

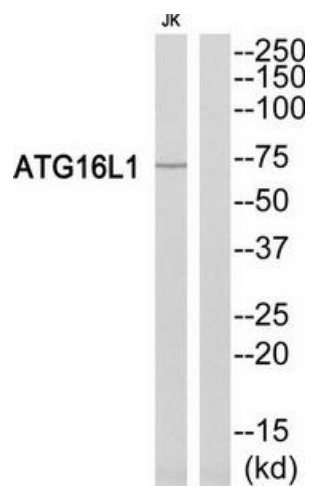
Product data:

Product Type:	Primary Antibodies
Applications:	WB
Recommended Dilution:	WB: 1:500~1:3000, ELISA: 1:5000
Reactivity:	Human
Host:	Rabbit
Isotype:	IgG
Clonality:	Polyclonal
Immunogen:	The antiserum was produced against synthesized peptide derived from Internal of human ATG16L1.
Formulation:	Phosphate buffered saline (without Mg ²⁺ and Ca ²⁺), pH 7.4, 150mM NaCl, 0.02% sodium azide and 50% glycerol.
Concentration:	lot specific
Purification:	The antibody was affinity-purified from rabbit antiserum by affinity-chromatography using epitope-specific immunogen.
Conjugation:	Unconjugated
Storage:	Store at -20°C as received.
Stability:	Stable for 12 months from date of receipt.
Gene Name:	autophagy related 16 like 1
Database Link:	NP_001177195 Entrez Gene 55054 Human Q676U5
Synonyms:	APG16L; ATG16A; ATG16L; IBD10; WDR30
Note:	ATG16L1 antibody detects endogenous levels of total ATG16L1 protein.



[View online »](#)

Product images:



Western blot analysis of extracts from Jurkat cells, using ATG16L1 antibody. The lane on the right is treated with the synthesized peptide.