

## Product datasheet for **TA315562**

### MRPL20 Rabbit Polyclonal Antibody

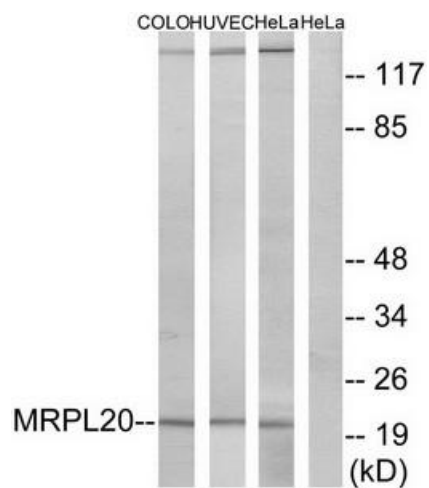
#### Product data:

Product Type:	Primary Antibodies
Applications:	WB
Recommended Dilution:	WB: 1:500~1:3000, ELISA: 1:40000
Reactivity:	Human, Mouse, Rat
Host:	Rabbit
Isotype:	IgG
Clonality:	Polyclonal
Immunogen:	The antiserum was produced against synthesized peptide derived from C-terminal of human MRPL20.
Formulation:	Phosphate buffered saline (without Mg <sup>2+</sup> and Ca <sup>2+</sup> ), pH 7.4, 150mM NaCl, 0.02% sodium azide and 50% glycerol.
Concentration:	lot specific
Purification:	The antibody was affinity-purified from rabbit antiserum by affinity-chromatography using epitope-specific immunogen.
Conjugation:	Unconjugated
Storage:	Store at -20°C as received.
Stability:	Stable for 12 months from date of receipt.
Gene Name:	mitochondrial ribosomal protein L20
Database Link:	<a href="#">NP_060441</a> <a href="#">Entrez Gene 66448 Mouse</a> <a href="#">Entrez Gene 680747 Rat</a> <a href="#">Entrez Gene 55052 Human</a> <a href="#">Q9BYC9</a>
Synonyms:	L20mt; MRP-L20
Note:	MRPL20 antibody detects endogenous levels of total MRPL20 protein.



[View online »](#)

## Product images:



Western blot analysis of extracts from COLO cells, HUVEC cells and HeLa cells, using MRPL20 antibody. The lane on the right is treated with the synthesized peptide.