

Product datasheet for **TA315560**

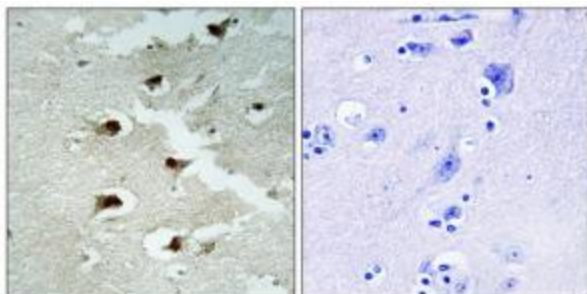
CDCA4 Rabbit Polyclonal Antibody

Product data:

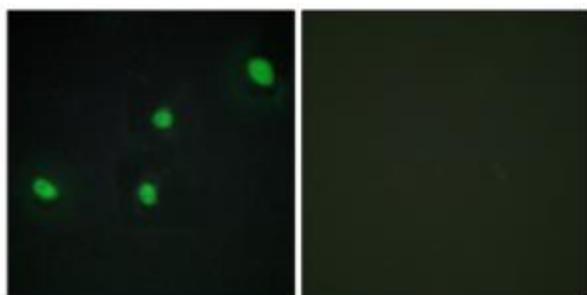
Product Type:	Primary Antibodies
Applications:	IF, IHC
Recommended Dilution:	IHC: 1:50~1:100, IF: 1:100~1:500, ELISA: 1:1000
Reactivity:	Human, Mouse
Host:	Rabbit
Isotype:	IgG
Clonality:	Polyclonal
Immunogen:	The antiserum was produced against synthesized peptide derived from internal of human CDCA4.
Formulation:	Phosphate buffered saline (without Mg ²⁺ and Ca ²⁺), pH 7.4, 150mM NaCl, 0.02% sodium azide and 50% glycerol.
Concentration:	lot specific
Purification:	The antibody was affinity-purified from rabbit antiserum by affinity-chromatography using epitope-specific immunogen.
Conjugation:	Unconjugated
Storage:	Store at -20°C as received.
Stability:	Stable for 12 months from date of receipt.
Gene Name:	cell division cycle associated 4
Database Link:	NP_060425 Entrez Gene 71963 Mouse Entrez Gene 55038 Human Q9BXL8
Synonyms:	HEPP; SEI-3
Note:	CDCA4 antibody detects endogenous levels of total CDCA4 protein.
Protein Families:	ES Cell Differentiation/IPS



[View online »](#)

Product images:

Immunohistochemistry analysis of paraffin-embedded human brain tissue using CDCA4 antibody. The picture on the right is treated with the synthesized peptide.



Immunofluorescence analysis of HepG2 cells, using CDCA4 antibody. The picture on the right is treated with the synthesized peptide.