

Product datasheet for **TA315557**

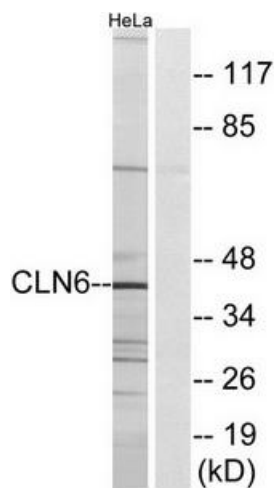
CLN6 Rabbit Polyclonal Antibody

Product data:

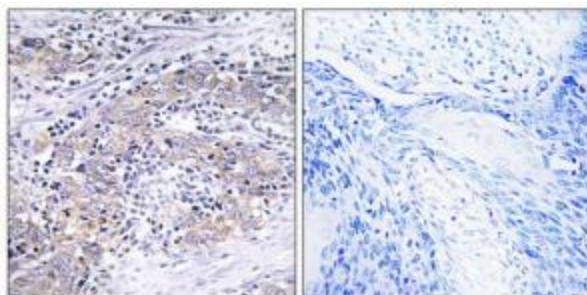
Product Type:	Primary Antibodies
Applications:	IHC, WB
Recommended Dilution:	WB: 1:500~1:3000, IHC: 1:50~1:100
Reactivity:	Human
Host:	Rabbit
Isotype:	IgG
Clonality:	Polyclonal
Immunogen:	The antiserum was produced against synthesized peptide derived from internal of human CLN6.
Formulation:	Phosphate buffered saline (without Mg ²⁺ and Ca ²⁺), pH 7.4, 150mM NaCl, 0.02% sodium azide and 50% glycerol.
Concentration:	lot specific
Purification:	The antibody was affinity-purified from rabbit antiserum by affinity-chromatography using epitope-specific immunogen.
Conjugation:	Unconjugated
Storage:	Store at -20°C as received.
Stability:	Stable for 12 months from date of receipt.
Gene Name:	ceroid-lipofuscinosis, neuronal 6, late infantile, variant
Database Link:	NP_060352 Entrez Gene 54982 Human Q9NWW5
Synonyms:	CLN4A; HsT18960; nclf
Note:	CLN6 antibody detects endogenous levels of total CLN6 protein.
Protein Families:	Transmembrane



[View online »](#)

Product images:

Western blot analysis of extracts from HeLa cells, using CLN6 antibody. The lane on the right is treated with the synthesized peptide.



Immunohistochemistry analysis of paraffin-embedded human cervix tissue using CLN6 antibody. The picture on the right is treated with the synthesized peptide.