

## Product datasheet for **TA315555**

### SSH3 Rabbit Polyclonal Antibody

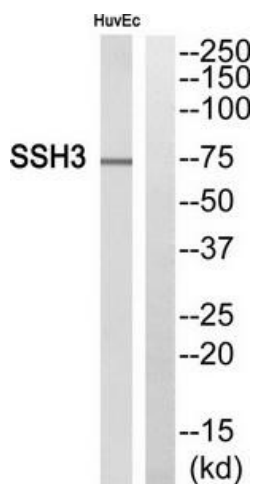
#### Product data:

Product Type:	Primary Antibodies
Applications:	IHC, WB
Recommended Dilution:	WB: 1:500~1:3000, IHC: 1:50~1:100, ELISA: 1:40000
Reactivity:	Human, Mouse, Rat
Host:	Rabbit
Isotype:	IgG
Clonality:	Polyclonal
Immunogen:	The antiserum was produced against synthesized peptide derived from internal of human SSH3.
Formulation:	Phosphate buffered saline (without Mg <sup>2+</sup> and Ca <sup>2+</sup> ), pH 7.4, 150mM NaCl, 0.02% sodium azide and 50% glycerol.
Concentration:	lot specific
Purification:	The antibody was affinity-purified from rabbit antiserum by affinity-chromatography using epitope-specific immunogen.
Conjugation:	Unconjugated
Storage:	Store at -20°C as received.
Stability:	Stable for 12 months from date of receipt.
Gene Name:	slingshot protein phosphatase 3
Database Link:	<a href="#">NP_060327</a> <a href="#">Entrez Gene 245857 MouseEntrez Gene 365396 RatEntrez Gene 54961 Human Q8TE77</a>
Synonyms:	SSH3L
Note:	SSH3 antibody detects endogenous levels of total SSH3 protein.
Protein Families:	Druggable Genome, Phosphatase
Protein Pathways:	Regulation of actin cytoskeleton

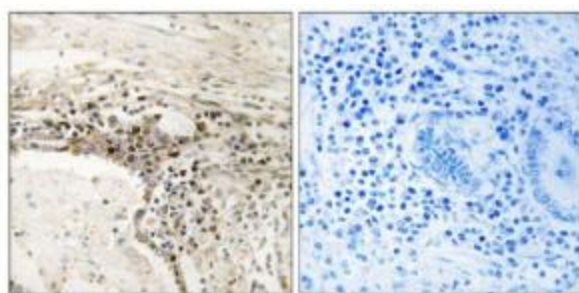


[View online »](#)

Product images:



Western blot analysis of extracts from HuvEc cells, using SSH3 antibody. The lane on the right is treated with the synthesized peptide.



Peptide

-

+

Immunohistochemistry analysis of paraffin-embedded human lung carcinoma tissue using SSH3 antibody. The picture on the right is treated with the synthesized peptide.