

Product datasheet for **TA315552**

Acyltransferase like 1 (LPCAT2) Rabbit Polyclonal Antibody

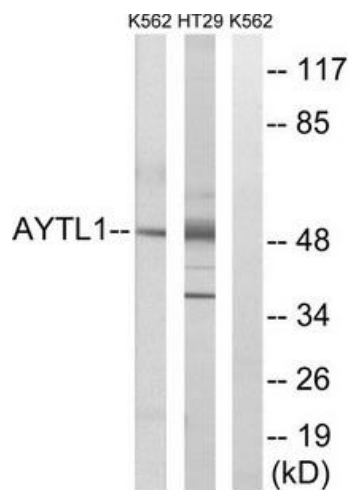
Product data:

Product Type:	Primary Antibodies
Applications:	WB
Recommended Dilution:	WB: 1:500~1:3000, ELISA: 1:40000
Reactivity:	Mouse, Rat, Human
Host:	Rabbit
Isotype:	IgG
Clonality:	Polyclonal
Immunogen:	The antiserum was produced against synthesized peptide derived from internal of human LPCAT2.
Formulation:	Phosphate buffered saline (without Mg ²⁺ and Ca ²⁺), pH 7.4, 150mM NaCl, 0.02% sodium azide and 50% glycerol.
Concentration:	lot specific
Purification:	The antibody was affinity-purified from rabbit antiserum by affinity-chromatography using epitope-specific immunogen.
Conjugation:	Unconjugated
Storage:	Store at -20°C as received.
Stability:	Stable for 12 months from date of receipt.
Gene Name:	lysophosphatidylcholine acyltransferase 2
Database Link:	NP_060309 Entrez Gene 270084 Mouse Entrez Gene 100359680 Rat Entrez Gene 54947 Human Q7L5N7
Synonyms:	AGPAT11; AYTL1; LysoPAFAT
Note:	LPCAT2 antibody detects endogenous levels of total LPCAT2 protein.
Protein Families:	Transmembrane



[View online »](#)

Product images:



Western blot analysis of extracts from K562 cells and HT-29 cells, using LPCAT2 antibody. The lane on the right is treated with the synthesized peptide.