

## Product datasheet for **TA315551**

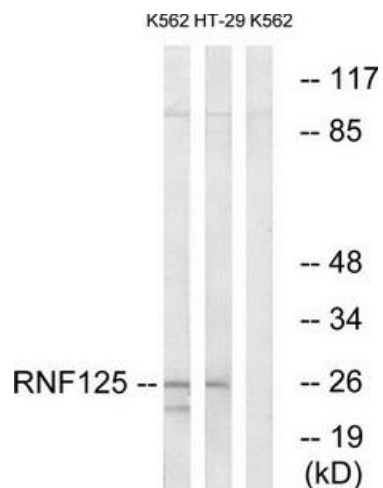
### RNF125 Rabbit Polyclonal Antibody

#### Product data:

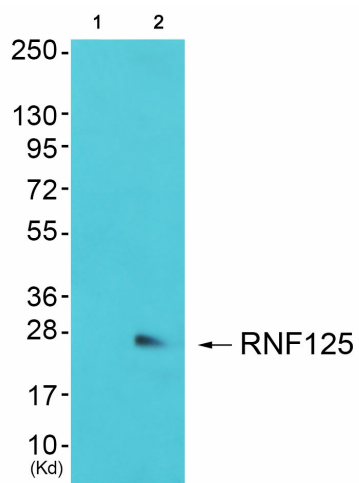
Product Type:	Primary Antibodies
Applications:	WB
Recommended Dilution:	WB: 1:500~1:3000, ELISA: 1:10000
Reactivity:	Human, Mouse, Rat
Host:	Rabbit
Isotype:	IgG
Clonality:	Polyclonal
Immunogen:	The antiserum was produced against synthesized peptide derived from internal of human RNF125.
Formulation:	Phosphate buffered saline (without Mg <sup>2+</sup> and Ca <sup>2+</sup> ), pH 7.4, 150mM NaCl, 0.02% sodium azide and 50% glycerol.
Concentration:	lot specific
Purification:	The antibody was affinity-purified from rabbit antiserum by affinity-chromatography using epitope-specific immunogen.
Conjugation:	Unconjugated
Storage:	Store at -20°C as received.
Stability:	Stable for 12 months from date of receipt.
Gene Name:	ring finger protein 125, E3 ubiquitin protein ligase
Database Link:	<a href="#">NP_060301</a> <a href="#">Entrez Gene 67664 MouseEntrez Gene 361296 RatEntrez Gene 54941 Human Q96EQ8</a>
Synonyms:	TNORS; TRAC-1; TRAC1
Note:	RNF125 antibody detects endogenous levels of total RNF125 protein.
Protein Families:	Druggable Genome
Protein Pathways:	RIG-I-like receptor signaling pathway



[View online »](#)

**Product images:**


Western blot analysis of extracts from K562 cells and HT-29 cells, using RNF125 antibody. The lane on the right is treated with the synthesized peptide.



Western blot analysis of extracts from 3T3 cells (Lane 2), using RNF125 Antibody. The lane on the left is treated with synthesized peptide.