

## Product datasheet for **TA315547**

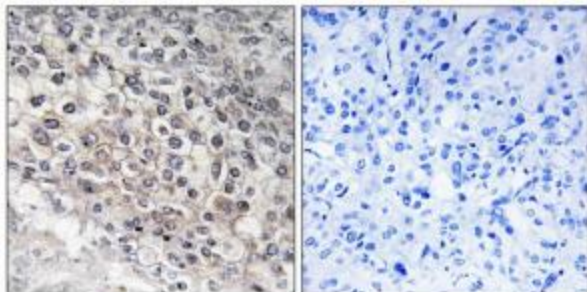
### CYP2W1 Rabbit Polyclonal Antibody

#### Product data:

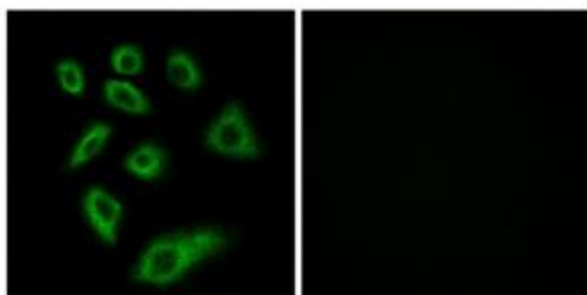
Product Type:	Primary Antibodies
Applications:	IF, IHC
Recommended Dilution:	IHC: 1:50~1:100, IF: 1:100~1:500, ELISA: 1:40000
Reactivity:	Human
Host:	Rabbit
Isotype:	IgG
Clonality:	Polyclonal
Immunogen:	The antiserum was produced against synthesized peptide derived from internal of human Cytochrome P450 2W1.
Formulation:	Phosphate buffered saline (without Mg <sup>2+</sup> and Ca <sup>2+</sup> ), pH 7.4, 150mM NaCl, 0.02% sodium azide and 50% glycerol.
Concentration:	lot specific
Purification:	The antibody was affinity-purified from rabbit antiserum by affinity-chromatography using epitope-specific immunogen.
Conjugation:	Unconjugated
Storage:	Store at -20°C as received.
Stability:	Stable for 12 months from date of receipt.
Gene Name:	cytochrome P450 family 2 subfamily W member 1
Database Link:	<a href="#">NP_060251</a> <a href="#">Entrez Gene 54905 Human</a> <a href="#">Q8TAV3</a>
Synonyms:	MGC34287
Note:	Cytochrome P450 2W1 antibody detects endogenous levels of total Cytochrome P450 2W1 protein.
Protein Families:	Druggable Genome, P450



[View online »](#)

**Product images:**

Immunohistochemistry analysis of paraffin-embedded human liver carcinoma tissue using Cytochrome P450 2W1 antibody. The picture on the right is treated with the synthesized peptide.



Immunofluorescence analysis of HuvEc cells, using Cytochrome P450 2W1 antibody. The picture on the right is treated with the synthesized peptide.