

Product datasheet for **TA315542**

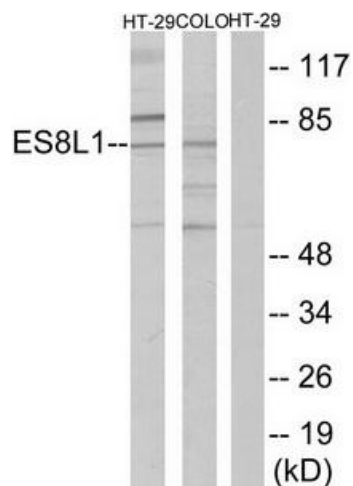
EPS8L1 Rabbit Polyclonal Antibody

Product data:

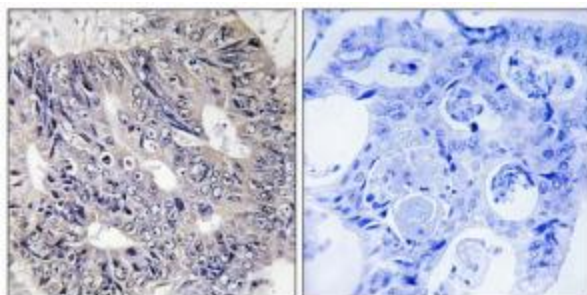
Product Type:	Primary Antibodies
Applications:	IHC, WB
Recommended Dilution:	WB: 1:500~1:3000, IHC: 1:50~1:100, ELISA: 1:20000
Reactivity:	Human, Mouse
Host:	Rabbit
Isotype:	IgG
Clonality:	Polyclonal
Immunogen:	The antiserum was produced against synthesized peptide derived from internal of human ES8L1.
Formulation:	Phosphate buffered saline (without Mg ²⁺ and Ca ²⁺), pH 7.4, 150mM NaCl, 0.02% sodium azide and 50% glycerol.
Concentration:	lot specific
Purification:	The antibody was affinity-purified from rabbit antiserum by affinity-chromatography using epitope-specific immunogen.
Conjugation:	Unconjugated
Storage:	Store at -20°C as received.
Stability:	Stable for 12 months from date of receipt.
Gene Name:	EPS8 like 1
Database Link:	NP_060199 Entrez Gene 67425 Mouse Entrez Gene 54869 Human Q8TE68
Synonyms:	DRC3; EPS8R1; PP10566
Note:	ES8L1 antibody detects endogenous levels of total ES8L1 protein.
Protein Families:	Druggable Genome



[View online »](#)

Product images:

Western blot analysis of extracts from COLO205 cells, using ES8L1 antibody. The lane on the right is treated with the synthesized peptide.



Immunohistochemistry analysis of paraffin-embedded human colon carcinoma tissue using ES8L1 antibody. The picture on the right is treated with the synthesized peptide.