

Product datasheet for **TA315540**

BCAS3 Rabbit Polyclonal Antibody

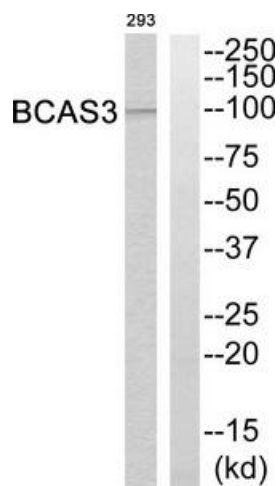
Product data:

Product Type:	Primary Antibodies
Applications:	WB
Recommended Dilution:	WB: 1:500~1:3000, ELISA: 1:10000
Reactivity:	Human, Mouse
Host:	Rabbit
Isotype:	IgG
Clonality:	Polyclonal
Immunogen:	The antiserum was produced against synthesized peptide derived from Internal of human BCAS3.
Formulation:	Phosphate buffered saline (without Mg ²⁺ and Ca ²⁺), pH 7.4, 150mM NaCl, 0.02% sodium azide and 50% glycerol.
Concentration:	lot specific
Purification:	The antibody was affinity-purified from rabbit antiserum by affinity-chromatography using epitope-specific immunogen.
Conjugation:	Unconjugated
Storage:	Store at -20°C as received.
Stability:	Stable for 12 months from date of receipt.
Gene Name:	breast carcinoma amplified sequence 3
Database Link:	NP_001092902 Entrez Gene 192197 Mouse Entrez Gene 54828 Human Q9H6U6
Synonyms:	GAOB1; MAAB
Note:	BCAS3 Antibody detects endogenous levels of total BCAS3 protein



[View online »](#)

Product images:



Western blot analysis of extracts from 293 cells, using BCAS3 Antibody. The lane on the right is treated with the synthesized peptide.