

## Product datasheet for **TA315537**

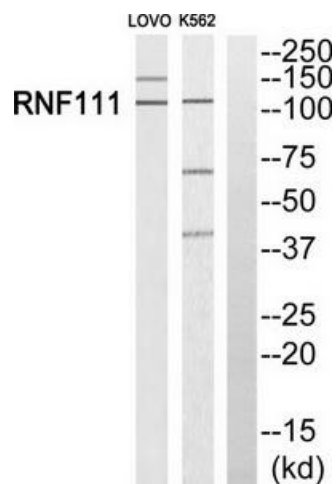
### **RNF111 Rabbit Polyclonal Antibody**

#### **Product data:**

Product Type:	Primary Antibodies
Applications:	WB
Recommended Dilution:	WB: 1:500~1:3000, ELISA: 1:40000
Reactivity:	Human, Mouse
Host:	Rabbit
Isotype:	IgG
Clonality:	Polyclonal
Immunogen:	The antiserum was produced against synthesized peptide derived from C-terminal of human RNF111.
Formulation:	Phosphate buffered saline (without Mg <sup>2+</sup> and Ca <sup>2+</sup> ), pH 7.4, 150mM NaCl, 0.02% sodium azide and 50% glycerol.
Concentration:	lot specific
Purification:	The antibody was affinity-purified from rabbit antiserum by affinity-chromatography using epitope-specific immunogen.
Conjugation:	Unconjugated
Storage:	Store at -20°C as received.
Stability:	Stable for 12 months from date of receipt.
Gene Name:	ring finger protein 111
Database Link:	<a href="#">NP_060080</a> <a href="#">Entrez Gene 93836 Mouse</a> <a href="#">Entrez Gene 54778 Human</a> <a href="#">Q6ZNA4</a>
Synonyms:	ARK
Note:	RNF111 antibody detects endogenous levels of total RNF111 protein.
Protein Families:	Druggable Genome



[View online »](#)

**Product images:**


Western blot analysis of extracts from LOVO cells and K562 cells, using RNF111 antibody. The lane on the right is treated with the synthesized peptide.