

Product datasheet for **TA315524**

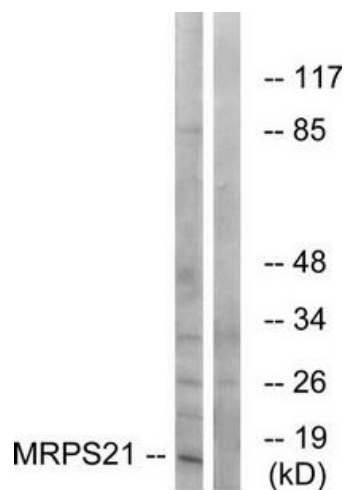
MRPS21 Rabbit Polyclonal Antibody

Product data:

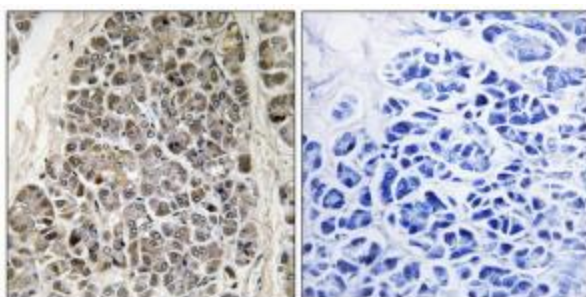
Product Type:	Primary Antibodies
Applications:	IF, IHC, WB
Recommended Dilution:	WB: 1:500~1:3000, IHC: 1:50~1:100, IF: 1:100~1:500, ELISA: 1:40000
Reactivity:	Human, Mouse, Rat
Host:	Rabbit
Isotype:	IgG
Clonality:	Polyclonal
Immunogen:	The antiserum was produced against synthesized peptide derived from internal of human MRPS21.
Formulation:	Phosphate buffered saline (without Mg ²⁺ and Ca ²⁺), pH 7.4, 150mM NaCl, 0.02% sodium azide and 50% glycerol.
Concentration:	lot specific
Purification:	The antibody was affinity-purified from rabbit antiserum by affinity-chromatography using epitope-specific immunogen.
Conjugation:	Unconjugated
Storage:	Store at -20°C as received.
Stability:	Stable for 12 months from date of receipt.
Gene Name:	mitochondrial ribosomal protein S21
Database Link:	NP_061870 Entrez Gene 66292 MouseEntrez Gene 689432 RatEntrez Gene 54460 Human P82921
Synonyms:	MDS016; MRP-S21; RPMS21
Note:	MRPS21 antibody detects endogenous levels of total MRPS21 protein.



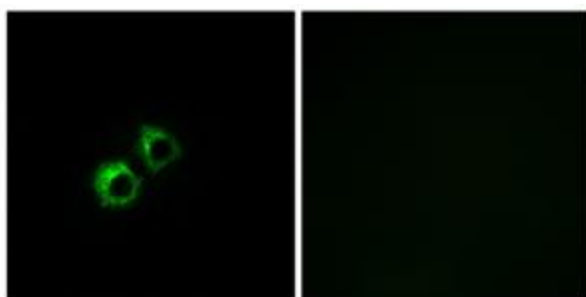
[View online »](#)

Product images:

Western blot analysis of extracts from COS cells, using MRPS21 antibody. The lane on the right is treated with the synthesized peptide.



Immunohistochemistry analysis of paraffin-embedded human pancreas tissue using MRPS21 antibody. The picture on the right is treated with the synthesized peptide.



Immunofluorescence analysis of MCF-7 cells, using MRPS21 antibody. The picture on the right is treated with the synthesized peptide.