

Product datasheet for **TA315522**

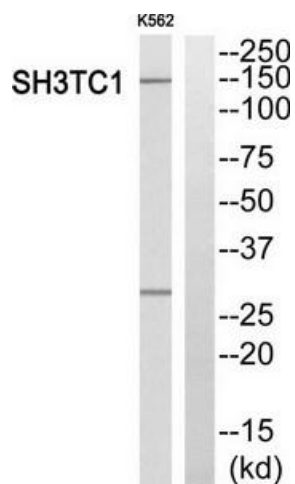
SH3TC1 Rabbit Polyclonal Antibody

Product data:

Product Type:	Primary Antibodies
Applications:	WB
Recommended Dilution:	WB: 1:500~1:3000, ELISA: 1:10000
Reactivity:	Human
Host:	Rabbit
Isotype:	IgG
Clonality:	Polyclonal
Immunogen:	The antiserum was produced against synthesized peptide derived from internal of human SH3TC1.
Formulation:	Phosphate buffered saline (without Mg ²⁺ and Ca ²⁺), pH 7.4, 150mM NaCl, 0.02% sodium azide and 50% glycerol.
Concentration:	lot specific
Purification:	The antibody was affinity-purified from rabbit antiserum by affinity-chromatography using epitope-specific immunogen.
Conjugation:	Unconjugated
Storage:	Store at -20°C as received.
Stability:	Stable for 12 months from date of receipt.
Gene Name:	SH3 domain and tetratricopeptide repeats 1
Database Link:	NP_061859 Entrez Gene 54436 Human Q8TE82
Synonyms:	FLJ20356; FLJ32999; FLJ36243; FLJ46394
Note:	SH3TC1 antibody detects endogenous levels of total SH3TC1 protein.

[View online »](#)

Product images:



Western blot analysis of extracts from K562 cells, using SH3TC1 antibody. The lane on the right is treated with the synthesized peptide.