

Product datasheet for **TA315504**

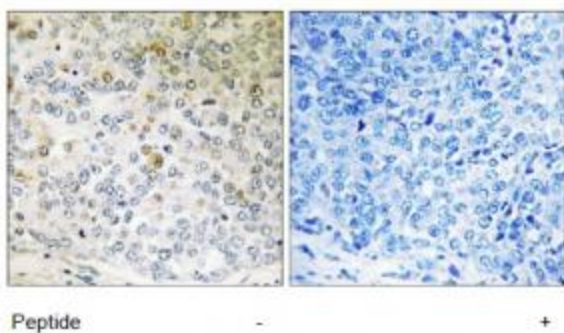
CALML5 Rabbit Polyclonal Antibody

Product data:

Product Type:	Primary Antibodies
Applications:	IHC
Recommended Dilution:	IHC: 1:50~1:100, ELISA: 1:20000
Reactivity:	Human
Host:	Rabbit
Isotype:	IgG
Clonality:	Polyclonal
Immunogen:	The antiserum was produced against synthesized peptide derived from internal of human CALML5.
Formulation:	Phosphate buffered saline (without Mg ²⁺ and Ca ²⁺), pH 7.4, 150mM NaCl, 0.02% sodium azide and 50% glycerol.
Concentration:	lot specific
Purification:	The antibody was affinity-purified from rabbit antiserum by affinity-chromatography using epitope-specific immunogen.
Conjugation:	Unconjugated
Storage:	Store at -20°C as received.
Stability:	Stable for 12 months from date of receipt.
Gene Name:	calmodulin like 5
Database Link:	NP_059118 Entrez Gene 51806 Human Q9NZT1
Synonyms:	CLSP
Note:	CALML5 antibody detects endogenous levels of total CALML5 protein.
Protein Pathways:	Alzheimer's disease, Calcium signaling pathway, Glioma, GnRH signaling pathway, Insulin signaling pathway, Long-term potentiation, Melanogenesis, Neurotrophin signaling pathway, Olfactory transduction, Oocyte meiosis, Phosphatidylinositol signaling system, Vascular smooth muscle contraction



[View online »](#)

Product images:

Immunohistochemistry analysis of paraffin-embedded human breast carcinoma tissue using CALML5 antibody. The picture on the right is treated with the synthesized peptide.