

Product datasheet for **TA315503**

ZAK (MAP3K20) Rabbit Polyclonal Antibody

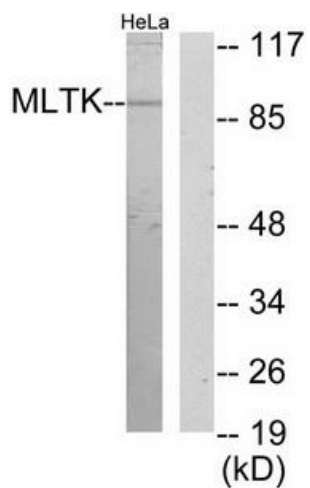
Product data:

Product Type:	Primary Antibodies
Applications:	IF, WB
Recommended Dilution:	WB: 1:500~1:3000, IF: 1:00~1:500, ELISA: 1:20000
Reactivity:	Human, Mouse
Host:	Rabbit
Isotype:	IgG
Clonality:	Polyclonal
Immunogen:	The antiserum was produced against synthesized peptide derived from C-terminal of human MLTK.
Formulation:	Phosphate buffered saline (without Mg ²⁺ and Ca ²⁺), pH 7.4, 150mM NaCl, 0.02% sodium azide and 50% glycerol.
Concentration:	lot specific
Purification:	The antibody was affinity-purified from rabbit antiserum by affinity-chromatography using epitope-specific immunogen.
Conjugation:	Unconjugated
Storage:	Store at -20°C as received.
Stability:	Stable for 12 months from date of receipt.
Gene Name:	mitogen-activated protein kinase kinase kinase 20
Database Link:	NP_057737 Entrez Gene 65964 Mouse Entrez Gene 51776 Human Q9NYL2
Synonyms:	AZK; MLK7; mlklak; MLT; MLTK; MRK; pk
Note:	MLTK antibody detects endogenous levels of total MLTK protein.
Protein Families:	Druggable Genome, Protein Kinase
Protein Pathways:	MAPK signaling pathway, Tight junction

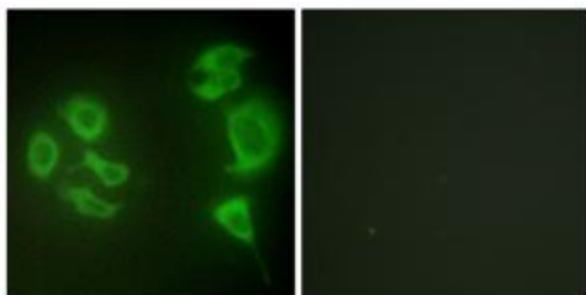


[View online »](#)

Product images:



Western blot analysis of extracts from HeLa cells, using MLTK antibody. The lane on the right is treated with the synthesized peptide.



Immunofluorescence analysis of HepG2 cells, using MLTK antibody. The picture on the right is treated with the synthesized peptide.