

Product datasheet for **TA315498**

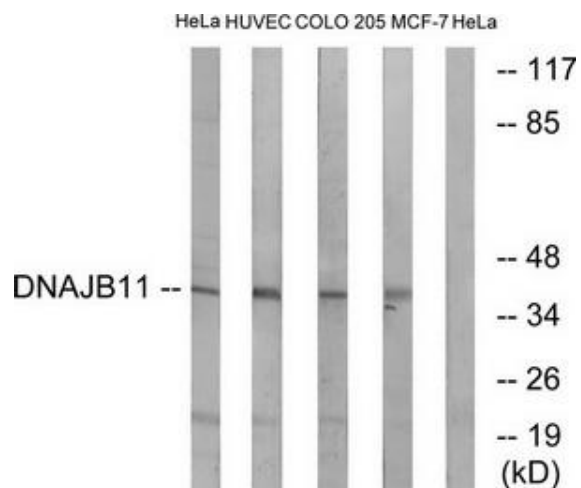
DNAJB11 Rabbit Polyclonal Antibody

Product data:

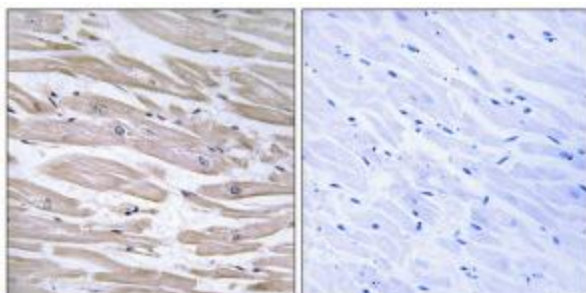
Product Type:	Primary Antibodies
Applications:	IHC, WB
Recommended Dilution:	WB: 1:500~1:3000, IHC: 1:50~1:100, ELISA: 1:20000
Reactivity:	Human, Mouse, Rat
Host:	Rabbit
Isotype:	IgG
Clonality:	Polyclonal
Immunogen:	The antiserum was produced against synthesized peptide derived from internal of human DNAJB11.
Formulation:	Phosphate buffered saline (without Mg ²⁺ and Ca ²⁺), pH 7.4, 150mM NaCl, 0.02% sodium azide and 50% glycerol.
Concentration:	lot specific
Purification:	The antibody was affinity-purified from rabbit antiserum by affinity-chromatography using epitope-specific immunogen.
Conjugation:	Unconjugated
Storage:	Store at -20°C as received.
Stability:	Stable for 12 months from date of receipt.
Gene Name:	DnaJ heat shock protein family (Hsp40) member B11
Database Link:	NP_057390 Entrez Gene 67838 MouseEntrez Gene 360734 RatEntrez Gene 51726 Human Q9UBS4
Synonyms:	ABBP-2; ABBP2; Dj-9; DJ9; EDJ; ERdj3; ERj3; ERj3p; PRO1080; UNQ537
Note:	DNAJB11 antibody detects endogenous levels of total DNAJB11 protein.
Protein Families:	Transmembrane



[View online »](#)

Product images:

Western blot analysis of extracts from HeLa cells, HUVEC cells, COLO cells and MCF-7 cells, using DNAJB11 antibody. The lane on the right is treated with the synthesized peptide.



Immunohistochemistry analysis of paraffin-embedded human heart tissue using DNAJB11 antibody. The picture on the right is treated with the synthesized peptide.