

Product datasheet for **TA315496S**

BRP44L (MPC1) Rabbit Polyclonal Antibody

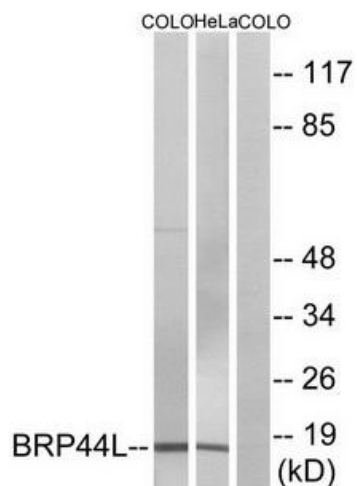
Product data:

Product Type:	Primary Antibodies
Applications:	IF, IHC, WB
Recommended Dilution:	WB: 1:500~1:3000, IHC: 1:50~1:100, IF: 1:100~1:500, ELISA: 1:20000
Reactivity:	Human, Mouse, Rat
Host:	Rabbit
Isotype:	IgG
Clonality:	Polyclonal
Immunogen:	The antiserum was produced against synthesized peptide derived from internal of human BRP44L.
Formulation:	Phosphate buffered saline (without Mg ²⁺ and Ca ²⁺), pH 7.4, 150mM NaCl, 0.02% sodium azide and 50% glycerol.
Concentration:	lot specific
Purification:	The antibody was affinity-purified from rabbit antiserum by affinity-chromatography using epitope-specific immunogen.
Conjugation:	Unconjugated
Storage:	Store at -20°C as received.
Stability:	Stable for 12 months from date of receipt.
Gene Name:	mitochondrial pyruvate carrier 1
Database Link:	NP_057182 Entrez Gene 55951 Mouse Entrez Gene 171087 Rat Entrez Gene 51660 Human Q9Y5U8
Synonyms:	BRP44L; CGI-129; dJ68L15.3; MPYCD
Note:	BRP44L antibody detects endogenous levels of total BRP44L protein.

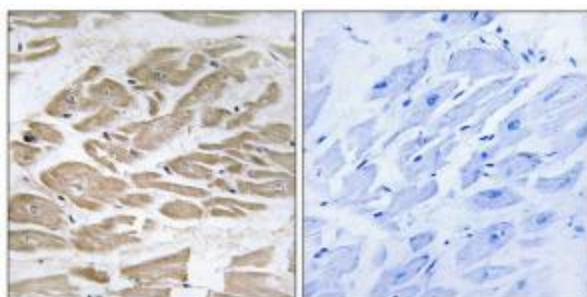


[View online »](#)

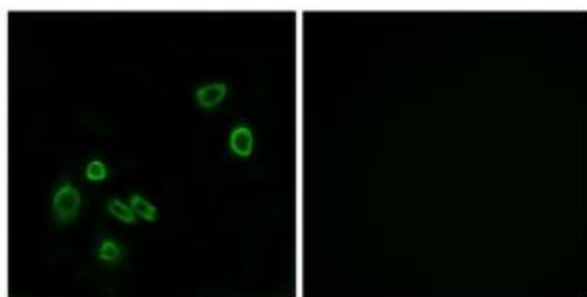
Product images:



Western blot analysis of extracts from COLO cells and HeLa cells, using BRP44L antibody. The lane on the right is treated with the synthesized peptide.



Immunohistochemistry analysis of paraffin-embedded human heart tissue using BRP44L antibody. The picture on the right is treated with the synthesized peptide.



Immunofluorescence analysis of A549 cells, using BRP44L antibody. The picture on the right is treated with the synthesized peptide.